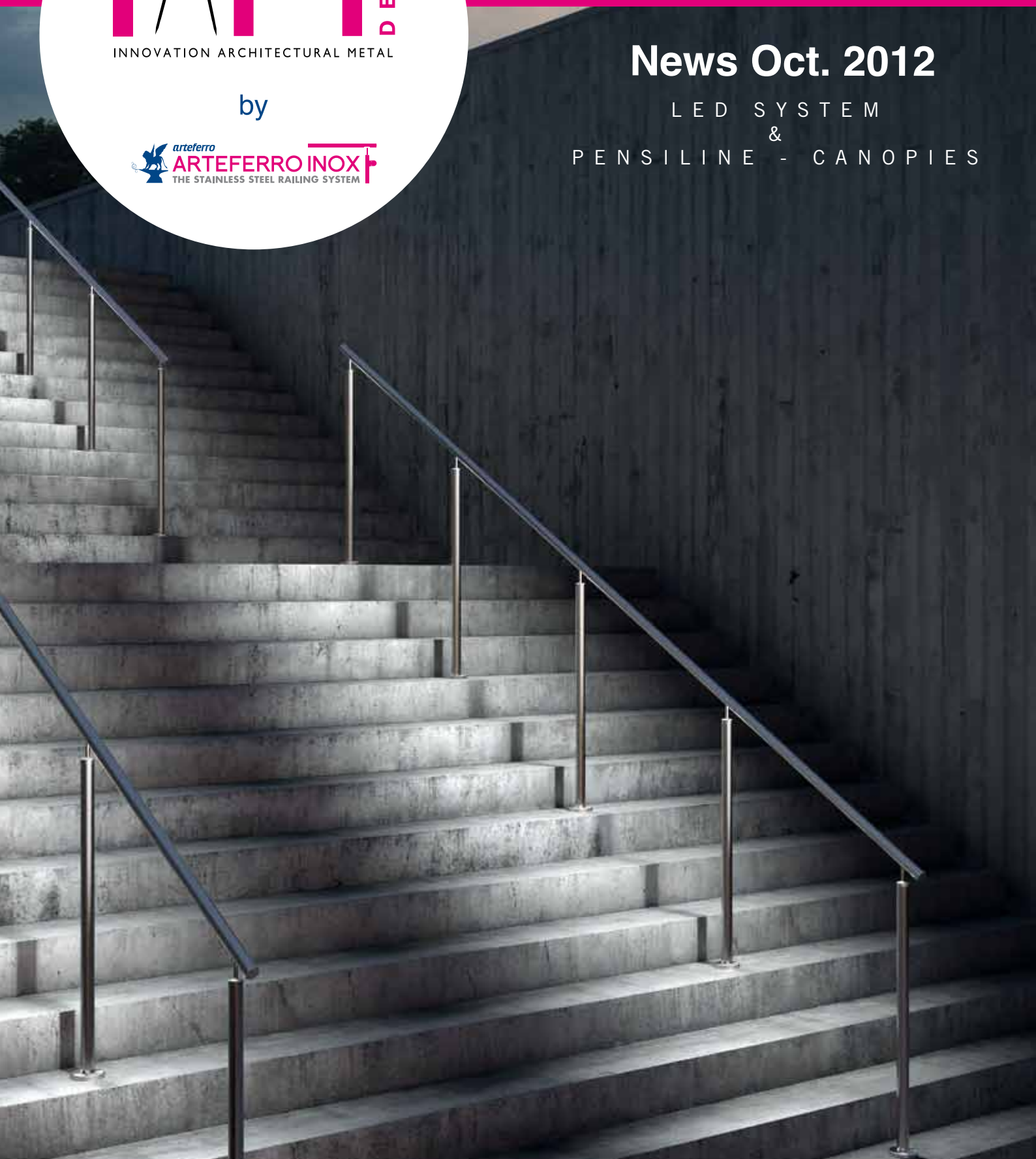


by



News Oct. 2012

LED SYSTEM
&
PENSILINE - CANOPIES





by



Nel ringraziarVi per l'attenzione dedicata alla lettura di questo documento, Vi ricordiamo che IAMdesign può soddisfare ogni Vostra particolare esigenza con progetti studiati e realizzati ad hoc. Per qualsiasi informazione Vi preghiamo di contattarci:
tel. 0445 580580
e-mail: info@arteferro.com

While thanking you for the attention given to this document, may we remind you that IAMdesign can satisfy any special need you might have, with projects studied and realized "ad hoc"
For any information, feel free to contact us:
Phone: +39 0445 580580
e-mail: info@arteferro.com

È un' innovativa creazione di IAMdesign che ti permette di integrare armonicamente l'illuminazione alle architetture più svariate.

Molto utile perchè permette di illuminare una scala o una passeggiata senza dover necessariamente illuminare tutto un ambiente.

Aumenta la tua sicurezza senza aumentare i tuoi costi grazie ai LED di ultimissima generazione ad alto risparmio energetico

It is an innovative creation of IAMdesign that allows you to harmoniously integrate the lighting to various architectures.

Very useful because it allows you to enlighten a stairway or a walk without having to light up an entire room.

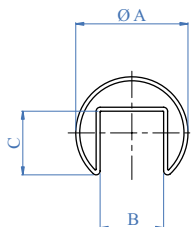
Increase your security without increasing your costs thanks to LED of the latest generation with high energy savings

IAM DESIGN®
INNOVATION ARCHITECTURAL METAL

by

arteferro
ARTEFERRO INOX
THE STAINLESS STEEL RAILING SYSTEM

RAILING LED SYSTEM



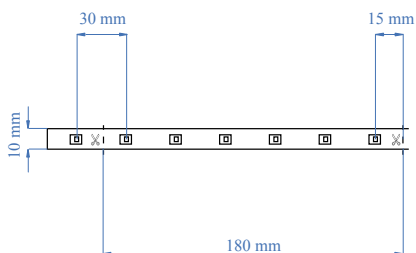
Corrimano in acciaio appositamente disegnato per la linea Railing Led System

Steel handrail specially designed for the Railing LED System line

AISI304	AISI316	Tubo Tube	A	B	C
E1000424	E1100424	Ø 42,4 x 1,5 x 6000 mm 1 2/3" dia. x 1/16" x 19' - 8"		25 mm 1"	24 mm 15/16"

Il rivoluzionario Cavo Led: totalmente impermeabilizzato subacqueo ultraluminoso (sopra a 180 lumen) ultrasottile, flessibile facile da installare e tagliare praticamente indistruttibile

The revolutionary LED Cable: totally waterproof underwater ultra-bright (over 180 lumens) ultra-thin flexible easy to install and cut, virtually indestructible



LED	L bobina L coil
ELED0001	Vendute a bobine da 25 metri Sold in coils of 984 1/4"

info

Input voltaggio - Input voltage	24 V
Input corrente - Input current	154 mA
Potenza - Power	3,7 W/m
Peso - Weight	60 g/m
Vita - Life time	35,000h
Angolo luminosità - Beam angle	110 C°
Luminouse /mt	198 lm
CRI	72
N. Led/18 cm/7 1/16"	6
T° di esercizio - Operating T°	-20 C° + 50 C°

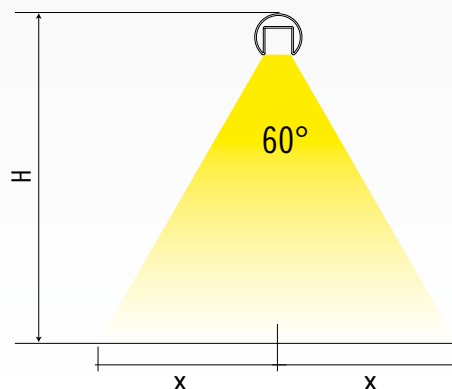


Ogni 18 cm sono segnati i punti dov'è possibile tagliare il nastro

Every 7 1/16" you find marks where you can cut the ribbon

USCITA LUCE E DISTRIBUZIONE COLORE
LIGHT EXIT AND COLOUR DISTRIBUTION

H	X
1200 mm - 47 1/4"	692 mm - 27 1/4"
1100 mm - 43 1/4"	635 mm - 25"
1000 mm - 39 1/2"	579 mm - 22 13/16"
900 mm - 35 7/16"	519 mm - 20 7/16"
800 mm - 31 1/2"	461 mm - 18 5/32"



	Descrizione <i>Description</i>
ELED0002	Per collegare la striscia Led all'alimentatore <i>To connect the LED strip to the feeder</i>
	Descrizione <i>Description</i>
ELED0003	Per unire due strisce Led linearmente <i>To join two LED strips linearly</i>
	Descrizione <i>Description</i>
ELED0004	Per unire due strisce Led con un cavo flessibile di 15 cm <i>To join two LED strips by a 5 7/8" flexible cable</i>
	Descrizione <i>Description</i>
ELED0005	Da utilizzare ad ogni installazione. Protegge la fine della striscia non connessa <i>To be used at each installation. Protects the end of the strip not connected</i>



Alimentatori
Feeders

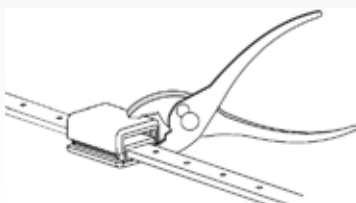
	Dimensioni <i>Dimensions</i>	INPUT	OUTPUT	POTENZA <i>POWER</i>
ELED0100	190 x 52 x 37 mm 7 15/32" x 2 1/32" x 1 7/16"	100-240VAC 2,2 A 50/60 Hz	+24 V 4,2 A	100 W < 27 mt - 1063"
ELED0110	162,5 x 42,5 x 32 mm 6 3/8" x 1 21/32" x 1 1/4"	100-240VAC 1,2 A 50/60 Hz	+24 V 2,5 A	60 W < 16 mt - 629-29/32"
ELED0120	148 x 40 x 30 mm 5 13/16" x 1 9/16" x 1 3/16"	100-240VAC 1,1 A 50/60 Hz	+24 V 1,5 A	35 W < 9 mt - 354-5/16"
ELED0130	140 x 30 x 20 mm 7 1/2" x 1 3/16" x 25/32"	200-240VAC 0,3 A 50/60 Hz	+24 V 0,75 A	18 W < 4 mt - 157-1/2"



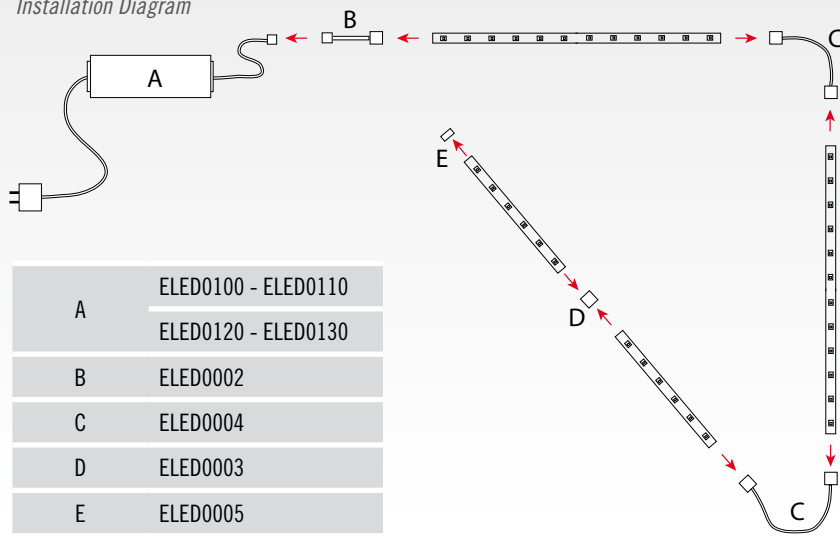
info

Utilizzare una pinza per fare pressione sia dall'alto che nel basso dei connettori per unire le strisce di Led

Use a clamp to apply pressure from above and below the connectors to join the strips of Leds



Schema di montaggio
Installation Diagram



Il semplicissimo sistema di led railing utilizza dei braccetti di sostegno di facile fissaggio al tubo scanalato.

The simple LED railing system employs supporting brackets that can be easily attached to the slotted tube. To attach the strips led to the slotted handrail

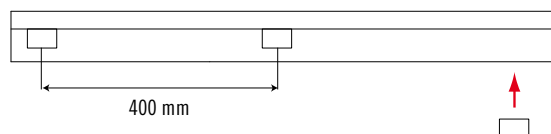
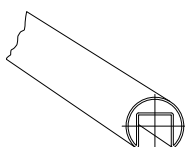
Descrizione Description	
ELED0006	Per attaccare le strisce Led al corrimano scanalato To attach the strips led to the slotted handrail



①

Applicare l'articolo ELED0006 all'interno del tubo scanalato grazie all'utilizzo del collante adesivo che si trova in dotazione. Posizionare i braccetti di fissaggio ad una distanza massima di 400 mm.

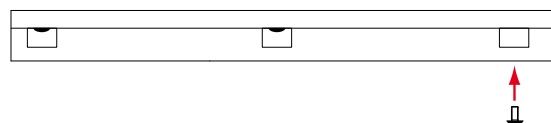
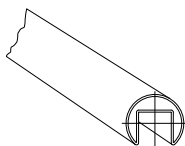
Apply the article ELED0006 inside the slotted tube using the supplied adhesive glue. Place the locking brackets at a maximum distance of 15 3/4 "



②

Per un fissaggio ancora più sicuro è possibile utilizzare delle viti M3 ancorate direttamente al corrimano scanalato. Ind.i.a. consiglia di eseguire un pre-foro prima di utilizzare la vite M3

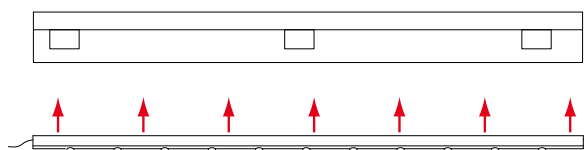
For a more secure fixing you can use the M3 screws directly anchored to the slotted handrail. Ind.i.a. recommends to make a pre-drilled hole before using the M3 screw



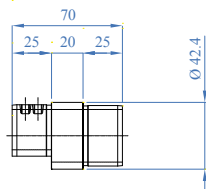
③

Applicare le luci Led al braccetto facendo una leggera pressione.

Apply the LED lights to the bracket by a slight pressure.

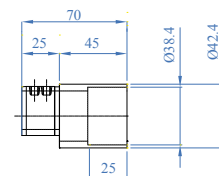






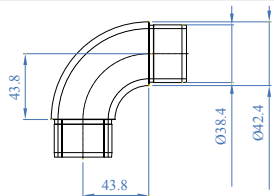
AISI316 Descrizione
Description

E1200120 Per unire il tubo scanalato ad un normale tubo Ø 42,4 mm
To join the slotted tube to a normal tube 1 2/3" dia.



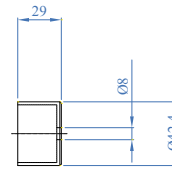
AISI316 Descrizione
Description

E1200130 Per unire il tubo scanalato all'articolo E450
To join the slotted tube to art. E450



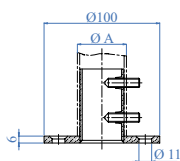
AISI316 Descrizione
Description

E450 Raccordo a 90°
90° connector



AISI316 Descrizione
Description

E1100120 Per andare con il cavo a parete
To lead the cable to the wall



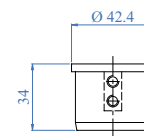
Fori con svassi e
perimetro bisellato
Countersunk holes and
chamfered perimeter

AISI304 **AISI316** Descrizione
Description

Per tubo
For tube A

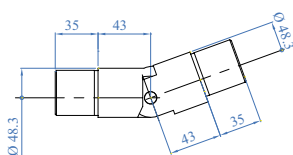
E0213 **E0213316** Ancoraggio a pavimento
Floor anchorage

Ø 42,4 x 2,0 mm
1 2/3" dia. x 5/64"



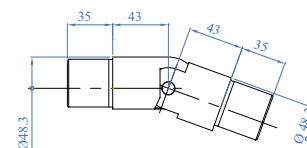
AISI316 Descrizione
Description

E1100100 Tappo terminale
End cap



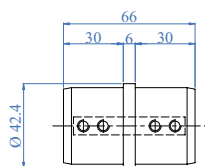
AISI316 Descrizione
Description

E1510100 Raccordo per tubo scanalato basculante
Articulated connector for slotted tube



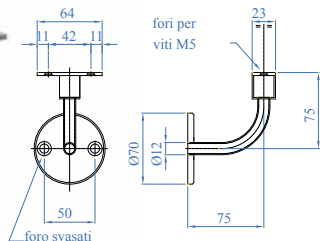
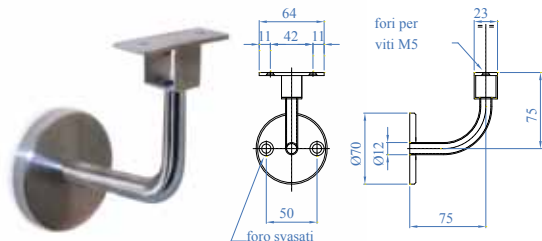
AISI316 Per tubo
For tube

E1520100 Raccordo basculante per tubo scanalato 25-55° verso il basso
Articulated connector 25-55° down for slotted tube



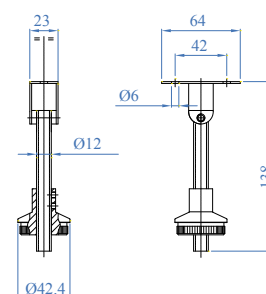
AISI316 Per tubo
For tube

E1200100 Ø 42,4 x 1,5 mm
1 2/3" dia. x 1/16"



AISI316 Descrizione
Description

E1530100 Reggicorrimano a parete
Wall handrail support

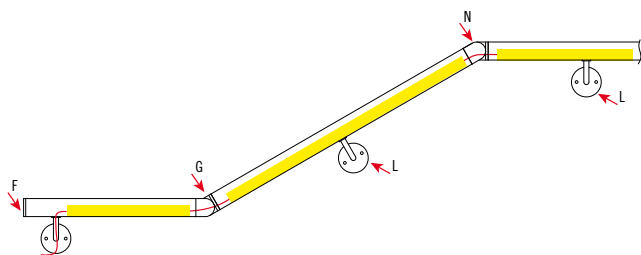
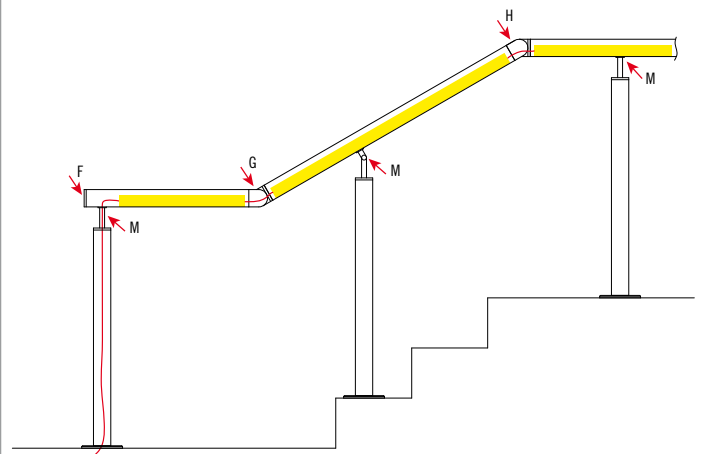
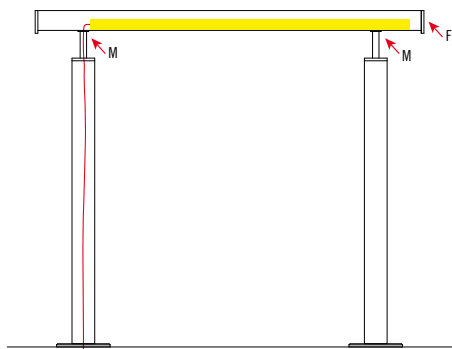
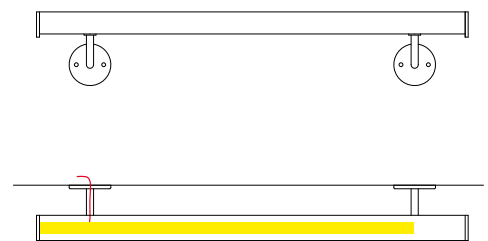
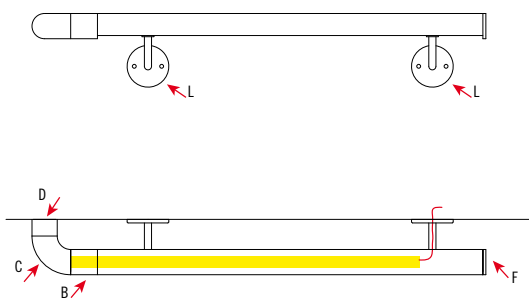
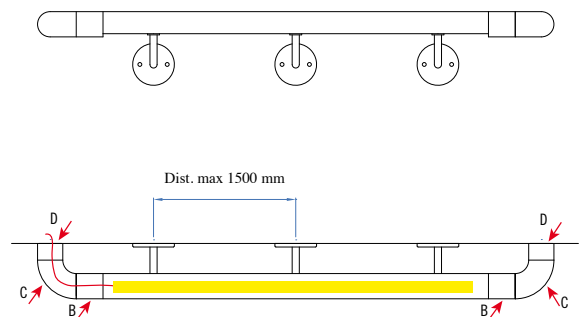
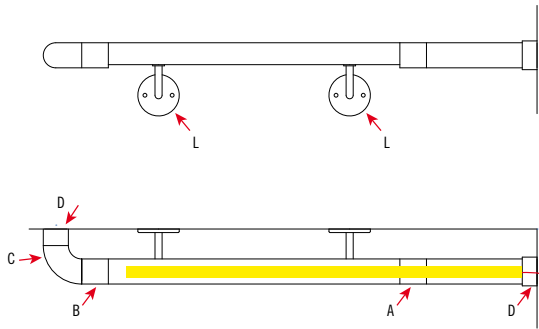


AISI316 Per tubo
For tube

E1540100 Reggicorrimano per montante
Handrail support for newelpost



ESEMPI DI APPLICAZIONE
EXAMPLES OF APPLICATIONS



A E1200120

B E1200130

C E450

D E1100120

E E0213

F E1100100

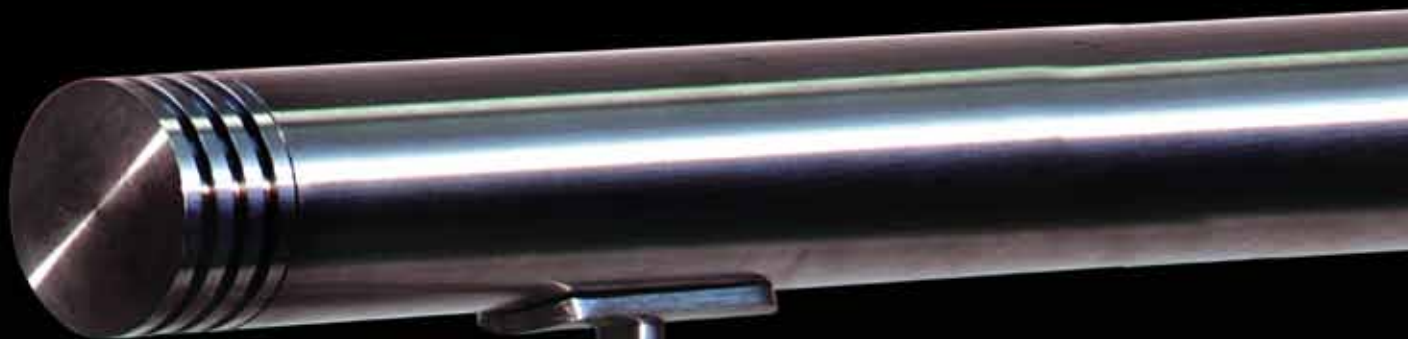
G E1510100

H E1520100

I E1200100

L E1530100

M E1540100



POST LED SYSTEM integra un LED a basso voltaggio ad un qualsiasi Parapetto realizzato con i prodotti IAMdesign

E un semplice sistema per rendere più sicuri i parapetto e le scale sia per uso interno che esterno.

POST LED SYSTEM integrates a low voltage LED to any Railing made with IAMdesign products

It's a simple system to make more secure railings and stairways for both indoor and outdoor use.

IAM DESIGN®
INNOVATION ARCHITECTURAL METAL

by

arteferro
ARTEFERRO INOX
THE STAINLESS STEEL RAILING SYSTEM

POST LED SYSTEM

USO INTERNO ED
ESTERNO
INDOOR
OUTDOOR USE



Forma cilindrica Ø 42,4 mm
Cylindric shape 1 2/3" dia.

AISI316	Per tubo For tube
ELED1000	Ø 42,4 x 2,0 mm - 1 2/3" dia. x 5/64"
ELED1100	Superficie piana - Flat face

USO INTERNO ED
ESTERNO
INDOOR
OUTDOOR USE



Forma cubica lato 40 mm
Cubic shape side 1 9/16"

AISI316	Per tubo For tube
ELED2000	Ø 42,4 x 2,0 mm - 1 2/3" dia. x 5/64"
ELED2100	Superficie piana - Flat face

FASI DI INSTALLAZIONE DEL LED
INSTALLATION STEPS FO THE LED

①
Forare e filettare M8
Drill and thread M8

②
Installare l'ancoraggio posteriore con la vite forata in dotazione
Install the rear anchor using the drilled screw included

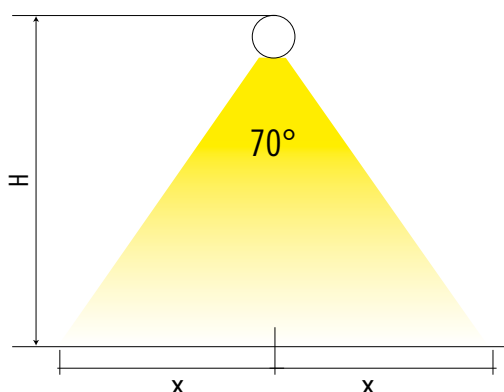
③
Inserire il cavo di alimentazione nel foro della vite e collegarlo all'alimentatore
Enter the power cable into the screw hole and connect it to the feeder

④
Fissare il faretto al suo ancoraggio stringendo il grano
Fix the spotlight to its anchor by tightening the grain

USCITA LUCE E DISTRIBUZIONE COLORE
LIGHT EXIT AND COLOUR DISTRIBUTION

H	X
1200 mm - 47 1/4"	840 mm - 33 1/16"
1100 mm - 43 1/4"	770 mm - 30 5/16"
1000 mm - 39 1/2"	700 mm - 27 9/16"
900 mm - 35 7/16"	630 mm - 24 25/32"
800 mm - 31 1/2"	560 mm - 22 1/16"
700 mm - 27 9/16"	490 mm - 19 9/32"
600 mm - 23 5/8"	420 mm - 16 17/32"
500 mm - 19 11/16"	350 mm - 13 25/32"
400 mm - 15 3/4"	280 mm - 11 1/32"
300 mm - 11 13/16"	210 mm - 8 1/4"
200 mm - 7 7/8"	140 mm - 5 1/2"

⑤
Installazione completata
Installation completed



www.aalco.co.uk
www.arteferroidox.com

ABERDEEN

Tel 01224 854810
Fax 01224 871982
e-mail aberdeen@aalco.co.uk

GLASGOW

Tel 0141 6463200
Fax 0141 6463260
e-mail glasgow@aalco.co.uk

NORWICH

Tel 01603 787878
Fax 01603 789999
e-mail norwich@aalco.co.uk

AYLESBURY

Tel 01296 461700
Fax 01296 339923
e-mail aylesbury@aalco.co.uk

HULL

Tel 01482 626262
Fax 01482 626263
e-mail hull@aalco.co.uk

NOTTINGHAM

Tel 0115 9882600
Fax 0115 9882636
e-mail nottingham@aalco.co.uk

BELFAST

Tel 02890 838838
Fax 02890 837837
e-mail belfast@aalco.co.uk

LEEDS

Tel 0113 2763300
Fax 0113 2760382
e-mail leeds@aalco.co.uk

PLYMOUTH

Tel 01752 770877
Fax 01752 770844
e-mail plymouth@aalco.co.uk

BIRMINGHAM

Tel 0121 5853600
Fax 0121 5856864
e-mail birmingham@aalco.co.uk

LIVERPOOL

Tel 0151 2073551
Fax 0151 2072657
e-mail liverpool@aalco.co.uk

SOUTHAMPTON

Tel 02380 875200
Fax 02380 875275
e-mail southampton@aalco.co.uk

CHEPSTOW

Tel 01291 638638
Fax 01291 638600
e-mail chepstow@aalco.co.uk

MANCHESTER

Tel 01204 863456
Fax 01204 863430
e-mail manchester@aalco.co.uk

STOKE

Tel 01782 375700
Fax 01782 375701
e-mail stoke@aalco.co.uk

DYFED

Tel 01269 842044
Fax 01269 845276
e-mail dyfed@aalco.co.uk

NEWCASTLE

Tel 0191 4911133
Fax 0191 4911177
e-mail newcastle@aalco.co.uk

SWANLEY

Tel 01322 610900
Fax 01322 610910
e-mail swanley@aalco.co.uk

ESSEX

Tel: +44 (0)1268 884200
Fax: +44 (0)1268 884220
email: essex@aalco.co.uk



Also available
in Ireland

DUBLIN

Tel +353 (0) 1 629 8600
Fax +353 (0) 1 629 9200
e-mail: dublin@amari-dublin.com

CORK

Tel +353 (0) 21 431 0520
Fax +353 (0) 21 431 0519
e-mail: cork@amari-cork.com