

aalco®

www.aalco.co.uk - www.iamdesign.com



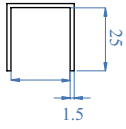
PROFILE SYSTEM & GLASS U

L'architettura e il design hanno sempre bisogno di nuove risposte, PROFILE SYSTEM è una di queste.

Architecture and design always need news answers. The PROFILE SYSTEM is one of them



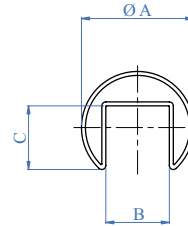




AISI316

Profilo
Profile

E1100000 25 x 25 x 1,5 mm x 3000 mm
1" x 1" x 1/16" x 9' - 10"



AISI304

AISI316

Tubo
Tube

A

B

C

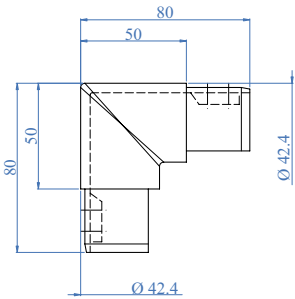
Satinato - Satin Finish

E1000424 E1100424 Ø 42,4 x 1,5 x 6000 mm
1 2/3" dia. x 1/16" x 19' - 8" 24 mm 24 mm
15/16" 15/16"

E1000483 E1100483 Ø 48,3 x 1,5 x 6000 mm
1 7/8" dia. x 5/64" x 19' - 8" 26 mm 30 mm
1 1/32" 1 3/16"

Lucido - Mirror Polished

X1100424 Ø 42,4 x 1,5 x 6000 mm
1 2/3" dia. x 1/16" x 19' - 8" 24 mm 24 mm
15/16" 15/16"



Verticale satinato con grana 240
Vertical satin finish with grain size 240

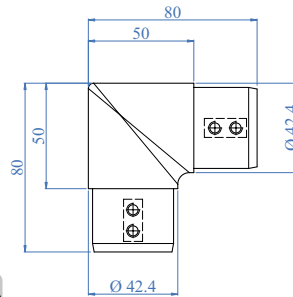
AISI304

AISI316

Per tubo
For tube

E1500200 E1500100 Ø 42,4 x 1,5 mm
1 2/3" dia. x 1/16"

- E1500110 Ø 48,3 x 1,5 mm
1 7/8" dia. x 5/64"



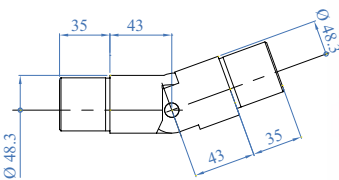
AISI304

AISI316

Per tubo
For tube

E1400200 E1400100 Ø 42,4 x 1,5 mm
1 2/3" dia. x 1/16"

- E1400110 Ø 48,3 x 1,5 mm
1 7/8" dia. x 5/64"



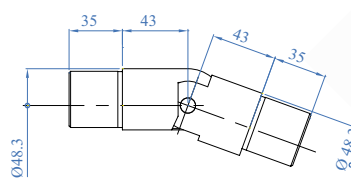
Raccordo snodato 25-55° verso l'alto
Upward pivotable connector, 25-55°

AISI316

Per tubo
For tube

E1510100 Ø 42,4 x 1,5 mm
1 2/3" dia. x 1/16"

E1510110 Ø 48,3 x 1,5 mm
1 7/8" dia. x 5/64"



Raccordo snodato 25-55° verso il basso
Downward pivotable connector, 25-55°

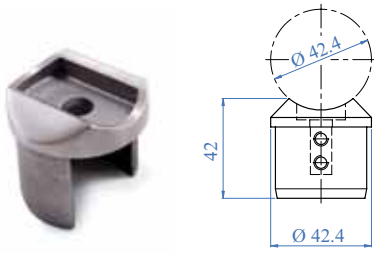
AISI316

Per tubo
For tube

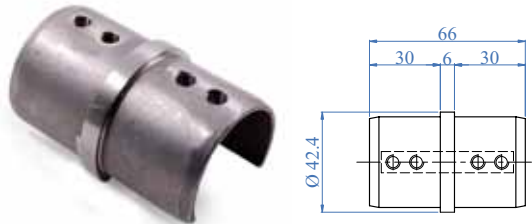
E1520100 Ø 42,4 x 1,5 mm
1 2/3" dia. x 1/16"

E1520110 Ø 48,3 x 1,5 mm
1 7/8" dia. x 5/64"

• PROFILE SYSTEM

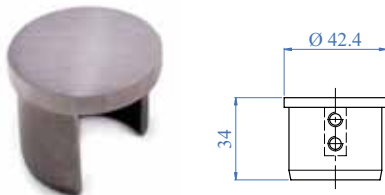


AISI316	Per tubo For tube
E1300100	Ø 42,4 x 1,5 mm 1 2/3" dia. x 1/16"
E1300110	Ø 48,3 x 1,5 mm 1 7/8" dia. x 5/64"

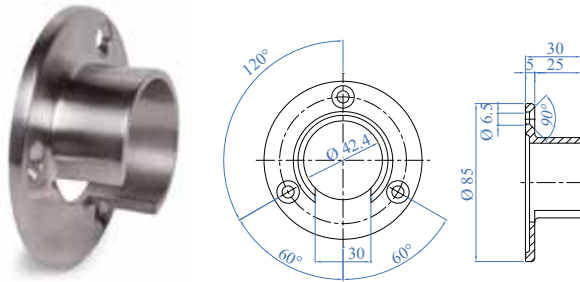


AISI304	AISI316	Per tubo For tube
E1200200	E1200100	Ø 42,4 x 1,5 mm 1 2/3" dia. x 1/16"
-	E1200110	Ø 48,3 x 1,5 mm 1 7/8" dia. x 5/64"

ANCORAGGIO A PARETE WALL ANCHORAGE



AISI304	AISI316	Per tubo For tube
E1100200	E1100100	Ø 42,4 x 1,5 mm 1 2/3" dia. x 1/16"
-	E1100110	Ø 48,3 x 1,5 mm 1 7/8" dia. x 5/64"



AISI316	Per tubo For tube
E1110100	Ø 42,4 x 1,5 mm 1 2/3" dia. x 1/16"
E1110110	Ø 48,3 x 1,5 mm 1 7/8" dia. x 5/64"

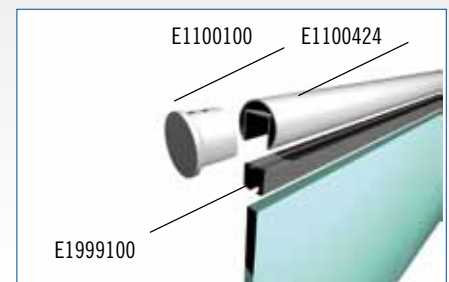
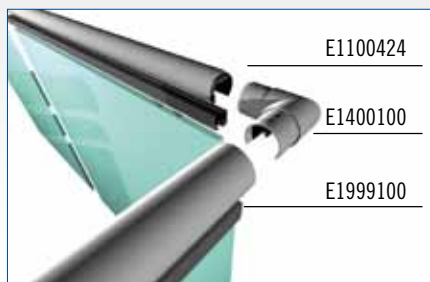


Disponibile anche in multipli di 6 metri
Also available in groups of 6 meters

RUBBER	Per tubo For tube	Vetro Glass	Lunghezza bobina Coil length
E1999100	Ø 42,4 mm 1 2/3" dia.	8 - 10,76 mm 5/16" - 7/16"	24 mt. 78' 8" 7/8
E1999200	Ø 42,4 mm 1 2/3" dia.	12 - 16,76 mm 1/2" - 5/8"	24 mt. 78' 8" 7/8
E1999300	Ø 42,4 mm 1 2/3" dia.	16,76 - 18 mm 5/8" - 11/16"	24 mt. 78' 8" 7/8
E1999350	Ø 42,4 mm 1 2/3" dia.	18 - 21,52 mm 11/16" - 7/8"	24 mt. 78' 8" 7/8
E1999400	Ø 48,3 mm 1 7/8" dia.	8 - 12,76 mm 5/16" - 1/2"	24 mt. 78' 8" 7/8
E1999500	Ø 48,3 mm 1 7/8" dia.	13 - 17,52 mm 33/64" - 11/16"	24 mt. 78' 8" 7/8
E1999650	Ø 48,3 mm 1 7/8" dia.	18 - 21,52 mm 11/16" - 7/8"	24 mt. 78' 8" 7/8

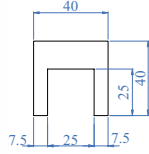


FACILE DA INSTALLARE - EASY TO INSTALL

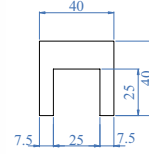


• PROFILE SYSTEM

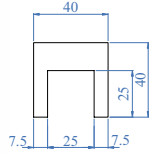
PROFILI IN LEGNO PER CORRIMANI WOODEN PROFILES FOR HANDRAILS



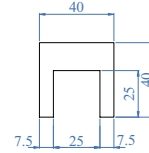
WOOD	Dimensioni <i>Dimensions</i>	Colore <i>Colour</i>
EW110000G	2,0 m 6,5 ft	Grezzo da verniciare Raw unpainted



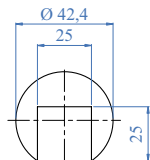
WOOD	Dimensioni <i>Dimensions</i>	Colore <i>Colour</i>
EW1100001	2,0 m 6,5 ft	Naturale Natural



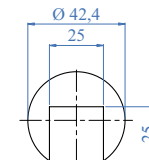
WOOD	Dimensioni <i>Dimensions</i>	Colore <i>Colour</i>
EW1100002	2,0 m 6,5 ft	Faggio Beech



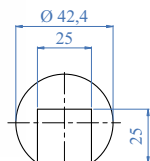
WOOD	Dimensioni <i>Dimensions</i>	Colore <i>Colour</i>
EW1100003	2,0 m 6,5 ft	Wengè Wengè



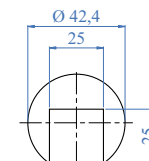
WOOD	Dimensioni <i>Dimensions</i>	Colore <i>Colour</i>
EW1100424G	2,0 m 6,5 ft	Grezzo da verniciare Raw unpainted



WOOD	Dimensioni <i>Dimensions</i>	Colore <i>Colour</i>
EW1100421	2,0 m 6,5 ft	Naturale Natural

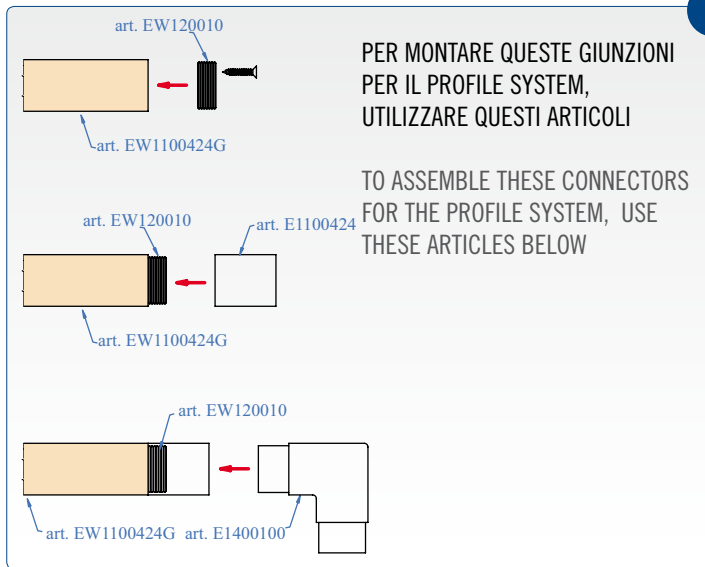


WOOD	Dimensioni <i>Dimensions</i>	Colore <i>Colour</i>
EW1100422	2,0 m 6,5 ft	Faggio Beech



WOOD	Dimensioni <i>Dimensions</i>	Colore <i>Colour</i>
EW1100423	2,0 m 6,5 ft	Wengè Wengè

ADATTATORE PER WOOD PROFILE SYSTEM
RUBBER ADAPTER FOR WOOD PROFILE SYSTEM



Kit composto da 3 pezzi:
N 1 spezzone di tubo E1100424
N 1 adattatore EW120010
N 1 vite autofilettante

Kit consisting of 3 parts:
N 1 section of tube E1100424
N 1 adapter EW120010
N 1 self threading screw

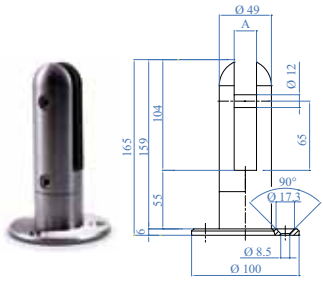


AISI316	Tubo scanalato <i>Groove tube</i>
EW120010	Ø 42,4 mm 1 2/3" dia.

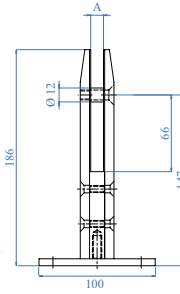


• PROFILE SYSTEM

SUPPORTI PER VETRO DA PAVIMENTO GLASS CLAMP FOR GROUND ANCHORAGE



2 pezzi: piastra di ancoraggio
Ø 100 mm con 3 fori svasati e
supporto per vetro alto 165 mm
2 pieces: anchor flange 3 15/16"
dia. and 3 countersunk holes and
glass clamp with 6 1/2"

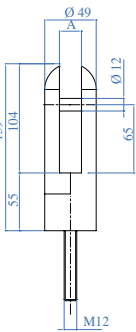


2 pezzi: piastra di ancoraggio
quadrata 100 mm con 4 fori e
supporti per vetro alto 186 mm
2 pieces: anchor flange 3 15/16"
sq. with 4 holes and glass
clamp with 7 9/32"

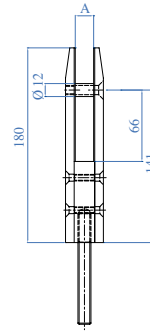


AISI304	AISI316	Spessore vetro Glass thickness A
E2000500	E2000600	12 e 17,52 mm 1/2" and 11/16"

AISI304	AISI316	Spessore vetro Glass thickness A
E2100500	E2100600	12 e 17,52 mm 1/2" and 11/16"



2 pezzi: supporto per vetro alto 159 mm
e barra filettata M 12 x L 120 mm
2 pieces: glass support 6 5/16" high
and M 12 threaded bar x L. 4 3/4"



2 pezzi: supporto per vetro alto 180 mm
e barra filettata M 12 x L 120 mm
2 pieces: glass support 7 3/32" high
and M 12 threaded bar x L. 4 3/4"



AISI304	AISI316	Spessore vetro Glass thickness A
E2000100	E2000200	12 e 17,52 mm 1/2" and 11/16"

AISI304	AISI316	Spessore vetro Glass thickness A
E2100100	E2100200	12 e 17,52 mm 1/2" and 11/16"



SUPPORTI PER VETRO DA PARETE
WALL GLASS CLAMPS

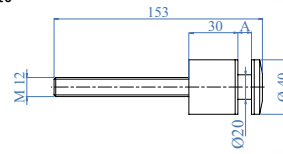


Supporto rotondo composto da vite filettata e attacco per vetro

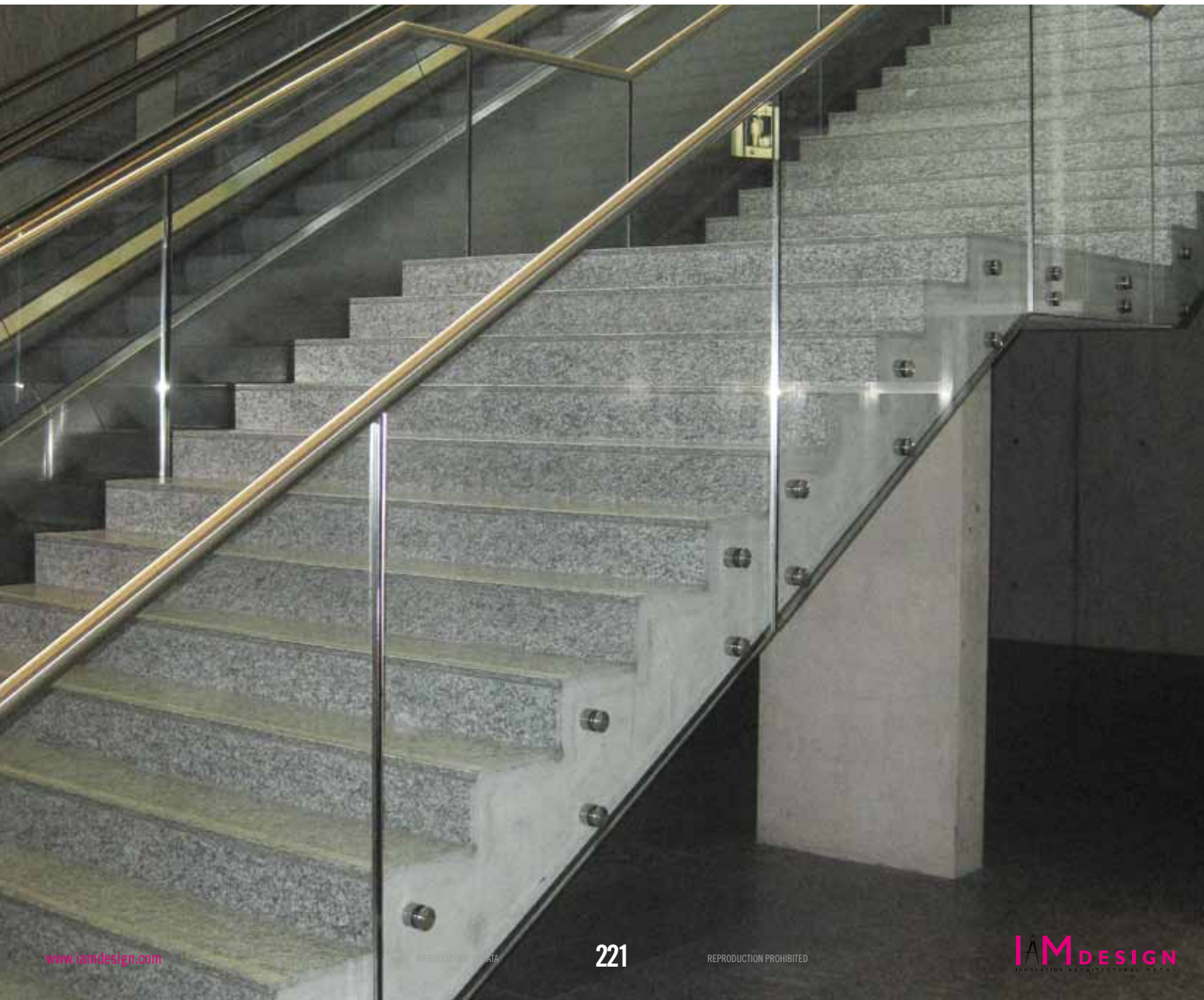
2kN



Round support complete with threaded screw and glass attachment



AISI304	AISI316	Spessore vetro Glass thickness A
E2200100	E2200200	da 8 a 12,76 mm from 5/16" to 1/2"
E2200300	E2200400	da 16,76 a 21,52 mm from 5/8" to 7/8"





glassu®

Glass U è la gamma di **sistemi modulari per realizzare ringhiere in vetro continuo** (quindi senza montanti) per scale e balaustre, ad **ancoraggio a pavimento o a parete**, adatto ad essere installato sia in **interni** che **esterni**, in ambienti **privati** o **pubblici**, anche ad alta frequentazione. Elegante e minimalista, ogni prodotto della linea Glass U è stato studiato per rispondere alle esigenze dell'installatore: IAM Design ha concepito un sistema di fissaggi che agevola l'installazione ed una gamma di supporti ed elementi di copertura complementari, già pronti per essere montati. Con poche semplici azioni, l'operazione di fissaggio garantisce la massima precisione esecutiva in tempi ridotti. Il sistema di cunei ferma vetro e di distanziatori garantisce la totale sicurezza di fissaggio delle lastre al profilo.

Installazione facile e veloce

Progettato in sinergia con installatori specializzati, ogni fase del montaggio risulta facile e chiara. Sbagliare è praticamente impossibile!

Massima versatilità

L'elegante design minimal rende i sistemi Glass U adatti ad ogni tipo di ambiente, dal più moderno al più classico; al contempo l'ampia gamma di accessori consente di rispondere a tutte le esigenze tecniche e di cantiere.

Comune denominatore dell'intera gamma sono i profili metallici ad "U", con sistema di ancoraggio a pavimento o a parete: quest'ultima tipologia di installazione è molto utile quando si desidera sfruttare tutto lo spazio disponibile sulla scala, sul pianerottolo, sulla terrazza.

Vetro e personalizzazione

L'elemento caratterizzante dei parapetti realizzati con il sistema Glass U è il vetro, temprato e stratificato. Cosa significa? elevata rigidità, contenimento dei frammenti in caso di rottura, schermatura UV, stabilità dei bordi, insonorizzazione e personalizzazione della trasparenza con finitura extrachiarata, satinata, acidata o colorata.

Per una più elevata resistenza, utile in ambienti pubblici ad alta frequentazione, sono disponibili vetri stratificati con intercalari plastici speciali.



Design solutions for glass railings

Glass U is a modular systems selection to create glass railings (without struts) for stairs and balconies, liable to floor or wall anchoring; it is suitable both for interiors and exteriors, both for private and public places (high traffic places, too). Every Glass U product is studied to meet technician demands: IAM Design creates a fastening system that supports the installation and a stands and complementary covering elements selection which are ready to be assembled. With just a few actions, the fastening procedure guarantees great executive precision and reduced installing time. Glass fasten wedges system guarantees complete security in fastening the sheet to the profile.

Easy and fast installation

Designed in synergistically with qualified technicians. Every phase in the assembly turns out to be easy and clear. To make a mistake would be impossible!

High versatility

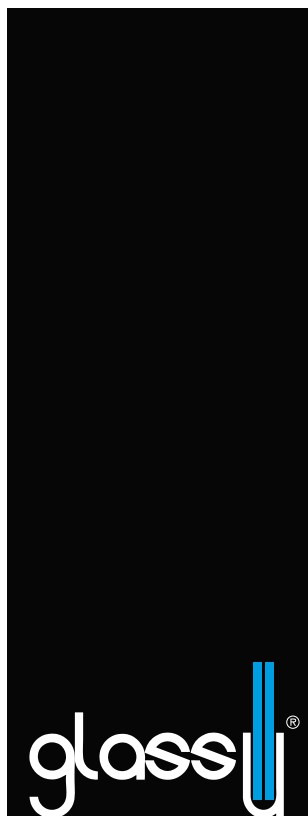
Thanks to its minimal design, Glass U systems are suitable to every location, both contemporary and classic. At the same time, the wide accessories selection allows a project to meet all sorts of technical and construction demands. "U" metallic profiles characterize the entire selection and have a floor and wall anchoring system: what's more, wall anchoring gets really useful when it is necessary to exploit space available on stairs, landings or terraces.

Glass and customization

The main element of Glass U balconies is the glass, case-hardened and stratified. What does it actually mean? High rigidity, fragments containment in case of breakage, UV protection, edges stability, soundproofing and transparency customization (with extraclear or clear color finishes).

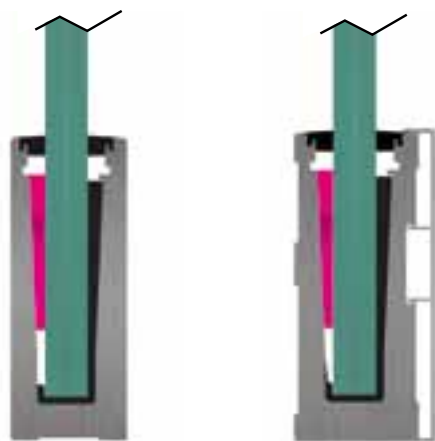
To get a higher resistance, especially in well frequented public spaces, stratified glass is available.

SCHEMA RIASSUNTIVO DEI PRODOTTI E LE LORO APPLICAZIONI



Glass U 2 kN

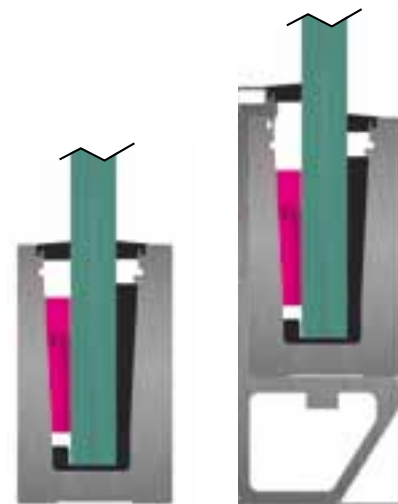
È la naturale evoluzione del modello Classic. Ideale per abitazioni private, bar, ristoranti e per la maggior parte dei luoghi pubblici, grazie all'aumentata resistenza al carico. Oltre al classico sistema di fissaggio è dotato di un brevettato sistema distanziatore per vetri che ne aumenta la solidità.
 Its "Classic" model evolution, thanks to high load resistance, is perfect for private housing, cafés, restaurants, and most any public spaces. Not only does it have the usual fastening system, but it is also characterised by a distancing patented system for glass which empowers its solidity.



Luogo pubblico
Public area

Glass U 3 kN

Progettato specificatamente per luoghi pubblici ad alta frequentazione come stadi, musei, centri commerciali, teatri, auditorium, è in grado di assorbire una forza laterale contro il vetro di 300 kg/ml, rispettando la normativa in termini di sicurezza. Oltre al classico sistema di fissaggio è dotato di un brevettato sistema distanziatore per vetri che ne aumenta la solidità.
 It is designed well for high traffic public spaces such as museums, shopping centres, theatres, and auditoriums. It succeeds in absorbing a 300 kg/ml side force against wind and respects security regulation. Not only does it have the usual fastening system, but it is also characterised by a distancing patented system for glass which empowers its solidity.



Luogo pubblico ad alta frequentazione
Well frequented public places

USO - USE

SPESS.VETRO GLASS THICKN.
(ESG & VSG da ESG*)

12-12,76-13,52-15-17,52
20,76-21,52

PESO DEL PROFILO
PROFILE WEIGHT

7,95 kg/ml

POSSIBILITÀ DI ANCORAGGIO
ANCHORAGE POSSIBILITY

Ancorato a pavimento
Floor Anchoring

Ancorato lateralmente
Lateral Anchoring

POSSIBILITÀ DI UTILIZZO
UTILIZATION POSSIBILITY

Utilizzo su Scala
Stairways

Utilizzo su Scala
Stairways

Utilizzo in piano
Linear

Utilizzo in piano
Linear

TESTATO
TESTED

carico di progetto
design load

carico di rottura
ultimate strength

2 kN
3,5 kN

2 kN
3,5 kN

CERTIFICAZIONI
CERTIFICATION

ISTITUTO GIORDANO

ISTITUTO GIORDANO

NUMERO PAGINA
PAGE NUMBER

227

228

20,76-21,52-24,76
25,52-31,52 mm

20,76-21,52-24,76
25,52-31,52 mm

12,97 kg/ml

12,97 kg/ml

Ancorato a pavimento
Floor Anchoring

Ancorato lateralmente
Lateral Anchoring

Utilizzo in piano
Linear

Utilizzo su Scala
Stairways

Utilizzo in piano
Linear

3 kN
4,5 kN

3 kN
4,5 kN

ISTITUTO GIORDANO

ISTITUTO GIORDANO

233

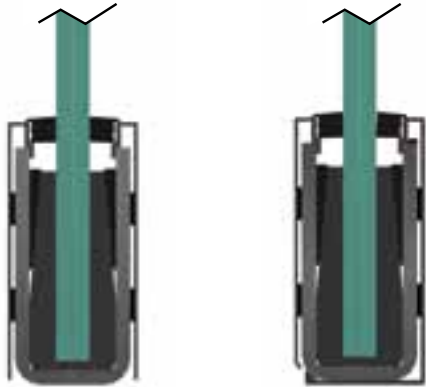
234

OUTLINE OF THE PRODUCTS AND THEIR APPLICATIONS

Glass U STEEL

Tra tutti è il Glass U più versatile e semplice da utilizzare. A differenza degli altri sistemi è realizzato principalmente in acciaio pertanto è molto resistente e meno delicato. Disponibile nella versione pre-zincata ma anche nella versione grezza, ideale per essere saldato o incementato a filo pavimento. Dotato di carter di copertura in alluminio con effetto acciaio inox. Indicato per edifici residenziali, case private, camere d'albergo, ristoranti.

It is the most adaptable and easy to use Glass U. It is steel, mainly made, so it is very resistant and less delicate. It is available in a pre-zinc-coated or rough version and it is also works being welded or embedded in concrete. A stainless steel lookalike, aluminum cover carter is provided. Recommended for residential buildings, private houses, hotel rooms, restaurants.



Luogo domestico
Domestic area

12-12,76-16,76-17,52
20,76-21,52

12-12,76-16,76-17,52
20,76-21,52

12 kg/ml

12 kg/ml

 Ancorato a pavimento
Floor Anchoring

 Ancorato lateralmente
Lateral Anchoring

 Utilizzo su Scala
Stairways

 Utilizzo in piano
Linear

 Utilizzo su Scala
Stairways

 Utilizzo in piano
Linear

1 kN
2 kN

(3 kN se annegato
if buried in concrete)

1 kN
2 kN

CE  ISTITUTO
GIORDANO

CE  ISTITUTO
GIORDANO

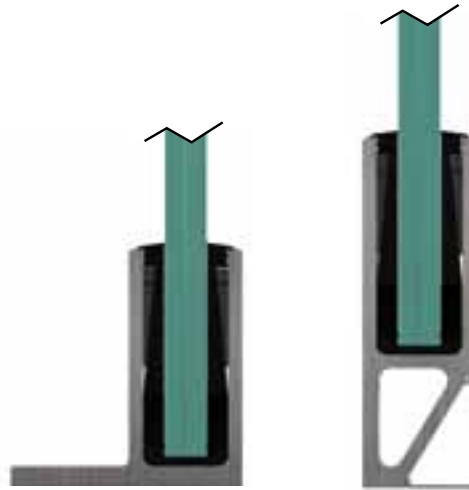
237

238

Glass U CLASSIC

Il sistema originale dal quale si è sviluppata tutta la gamma di prodotti Glass U. Glass U Classic, leggero e semplice da assemblare, è ideale per uso residenziale ma anche per la maggior parte dei luoghi pubblici a bassa frequentazione. Può essere installato a vista.

Glass U Classic is the original system, light and easy to set up. It is perfect both for housing and light traffic public spaces. It can be installed in view.



Luogo domestico
Domestic area

12-12,76-16,76-17,52
20,76-21,52

12-12,76-16,76-17,52
20,76-21,52

5,73 kg/ml

5,53 kg/ml

 Ancorato a pavimento
Floor Anchoring

 Ancorato lateralmente
Lateral Anchoring

 Utilizzo in piano
Linear

 Utilizzo su Scala
Stairways

 Utilizzo in piano
Linear

1 kN
2 kN

1 kN
2 kN

CE  SSV

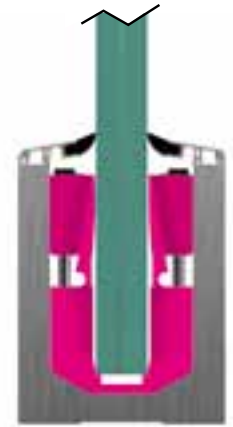
CE  SSV

241

241

Glass U PRECISION

Ultimo nato nella famiglia GLASS U, "Precision" rivoluziona il concetto di fissaggio del vetro. Grazie al sistema brevettato di fissaggio concepito dal Team di IAM Design permette di regolare facilmente l'inclinazione del vetro, velocizzando così di molto la posa. Ideale per edifici pubblici. "Precision" is the final design in our Glass U family and it represents a revolution in glass fastening concept. Thanks to a fastening patented system designed by our IAM Design Team, it is possible to regulate glass grade and reach a fast laying. This is perfect for glass professionals. Recommended for public buildings.



Luogo pubblico
Public area

16,76-17,52-20,76-21,52

10,22 kg/ml

 Ancorato a pavimento
Floor Anchoring

 Utilizzo su Scala
Stairways

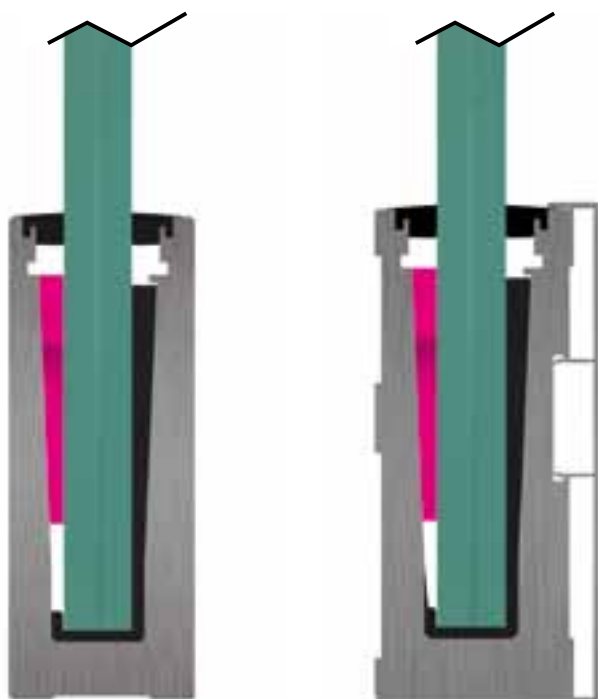
 Utilizzo in piano
Linear

2 kN
3 kN

CE

245-246

carico di progetto design load	2 kN
carico di rottura ultimate strength	3,5 kN



È la naturale evoluzione del modello Classic. Ideale per abitazioni private, bar, ristoranti e per la maggior parte dei luoghi pubblici, grazie all'aumentata resistenza al carico. Oltre al classico sistema di fissaggio è dotato di un brevettato sistema distanziatore per vetri che ne aumenta la solidità.

Its "Classic" model evolution, thanks to high load resistance, is perfect for private housing, cafés, restaurants, and most any public spaces. Not only does it have the usual fastening system, but it is also characterised by a distancing patented system for glass which empowers its solidity.

I profili sono forniti di:

- tappi di chiusura
- distanziali da inserire alla fine di ogni vetro
- distanziali da applicare alla base dei profili per favorire lo scorrimento dei liquidi.
- kit di cunei di fissaggio in materiale sintetico
- guarnizioni di chiusura in gomma per vetri di vari spessori indicati in tabella

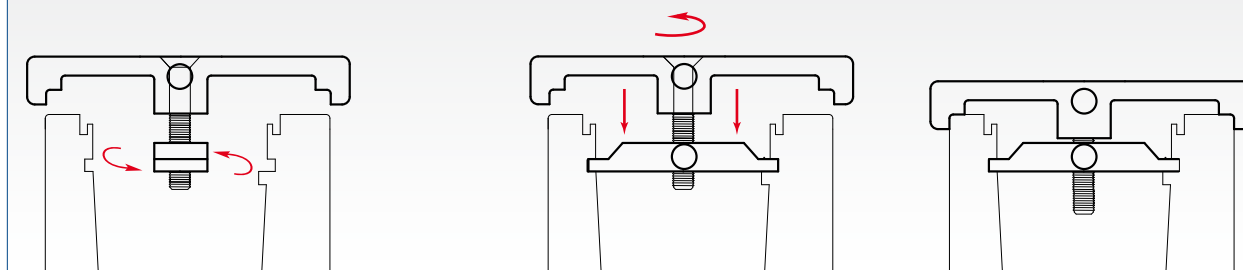
Profiles are provided with:

- closure tops
- spacers to insert at the end of each glass
- spacers to apply at the base of each profile to support fluids flow
- fastening wedges kits in synthetic material
- rubber closure seals for various glass thickness, as in the chart

I Distanziali inseriti alla fine di ogni vetro garantiscono una maggiore sicurezza e stabilità del profilo nel tempo. Evitando possibili movimenti, i distanziali permettono una maggiore aderenza profilo-vetro

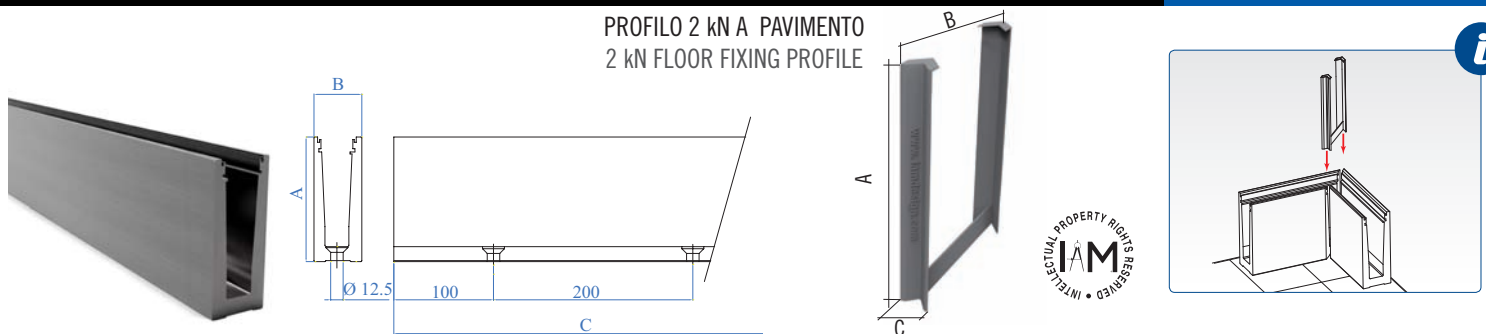
Spacers, which are inserted at the end of each glass, guarantee more safety and stability to the profile. They allow a better adherence between glass and profile, while preventing any movement.

E1800240



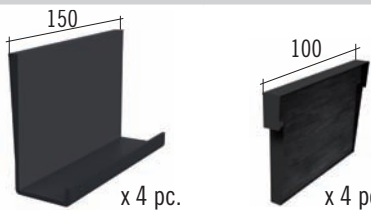
i

PROFILO 2 kN A PAVIMENTO
2 kN FLOOR FIXING PROFILE



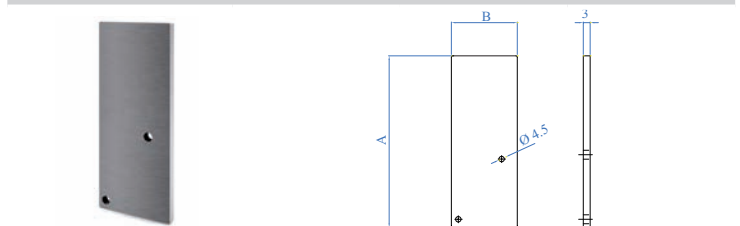
ALUMINIUM	A	B	C
E1800130	125 mm - 4 59/64"	48 mm - 1 57/64"	3000 mm - 9' - 10"

AISI316	A	B	C
E1999001	125 mm - 4 59/64"	78 mm - 3 1/16"	15 mm - 19/32"

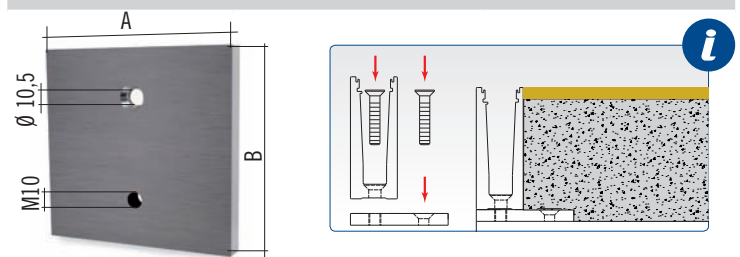


Kit di fissaggio per parapetto di 1 m
Fixing kit for 1 meter baluster

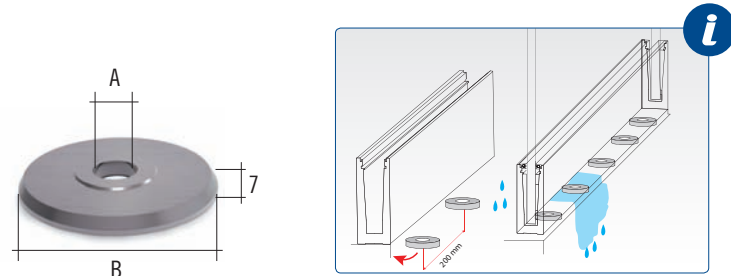
PLASTIC	Spessore vetro Glass thickness
E1804600	12,76 mm - 1/2"
E1807600	13,52 mm - 13,52"
E1808600	15 mm - 19/32"
E1809600	16,76 mm - 21/32"
E1805600	17,52 mm - 11/16"
E1810600	19 mm - 3/4"
E1806600	20,76 - 21,52 mm - 3/4" - 7/8"



ALUMINIUM	A	B
E1800215	125 mm - 4 59/64"	48 mm - 1 57/64"



IRON - ZINC	A	B
E1800360	100 mm - 3 15/16"	100 mm - 3 15/16"



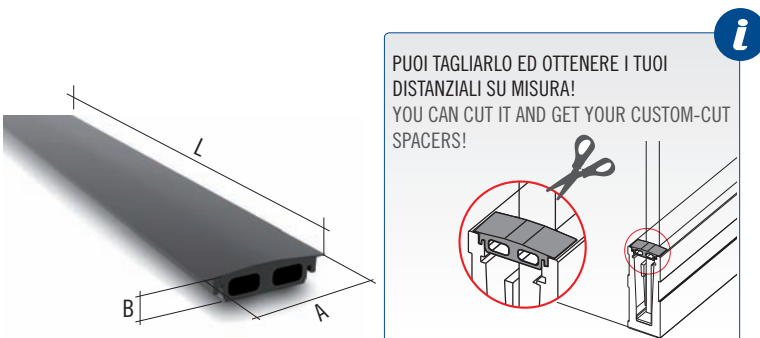
ALUMINIUM	A	B
E1800350	Ø 20 mm - 3/4" dia.	Ø 48 mm - 1 57/64" dia.



Per vetri di spessore 15 mm, utilizza le guarnizioni come indicato nella grafica. For 15-mm-thick glass, use the rubbers as shown in the graphic.

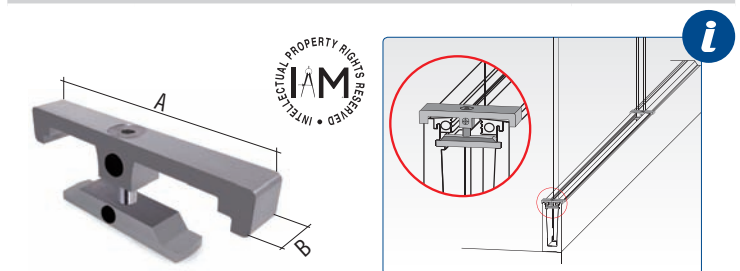
lato/side A E1804620
lato/side B E1803620

RUBBER	Spessore vetro Glass thickness	L
E1804620	12,76-13,52 mm e/and 15 mm - 1/2" - 13,52" - 19/32"	30 m - 100'
E1803620	16,76-17,52 e/and 19 mm - 21/32" - 11/16" - 3/4"	30 m - 100'
E1806620	20,76 e 21,52 mm - 3/4" and 7/8"	30 m - 100'



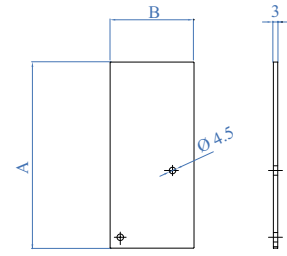
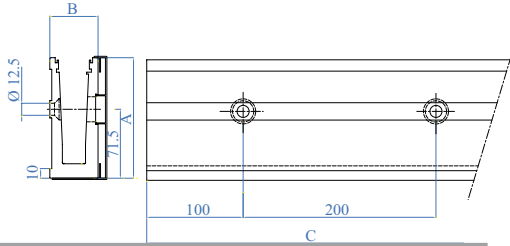
PUOI TAGLIARLO ED OTTENERE I TUOI DISTANZIALI SU MISURA!
YOU CAN CUT IT AND GET YOUR CUSTOM-CUT SPACERS!

RUBBER	A	B	L
E1999004	45 mm - 1 25/32"	10,5 mm - 25/32"	500 mm - 1' 7 11/16"



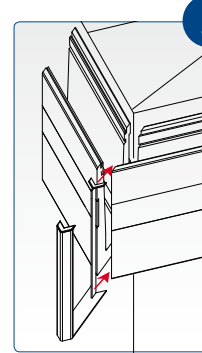
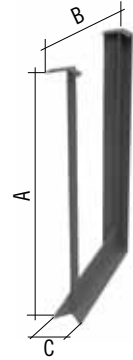
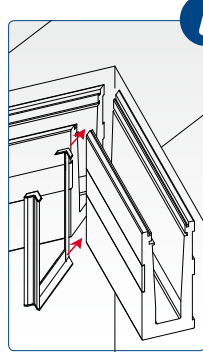
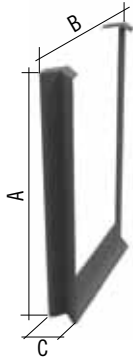
AISI316	A	B
E1800240	58 mm - 2 9/32"	15 mm - 19/32"

PROFILO 2 kN A PARETE
2 kN WALL FIXING PROFILE



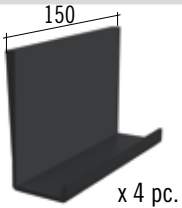
ALUMINIUM	A	B	C
E1800140	125 mm 4 59/64"	50 mm 2"	3000 mm 9' - 10"

ALUMINIUM	A	B
E1800216	128 mm 5 1/32"	58 mm 2 9/32"



AISI316	A	B	C
E1999002	127 mm 5"	79 mm 3 1/8"	15 mm 19/32"

AISI316	A	B	C
E1999003	127 mm 5"	78 mm 3 1/16"	15 mm 19/32"



x 4 pc.



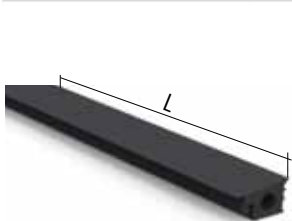
x 4 pc.

Kit di fissaggio per parapetto di 1 m
Fixing kit for 1 meter baluster

PLASTIC	Spessore vetro Glass thickness
E1804600	12,76 mm - 1/2"
E1807600	13,52 mm - 13,52"
E1808600	15 mm - 19/32"
E1809600	16,76 mm - 21/32"
E1805600	17,52 mm - 11/16"
E1810600	19 mm - 3/4"
E1806600	20,76 - 21,52 mm - 3/4" - 7/8"

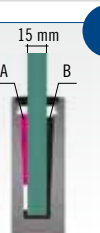


Descrizione Description	
E40588	Strumento per l'inserimento e l'estrazione dei cunei dal profilo Tool for insertion and removal of the wedges from the profile

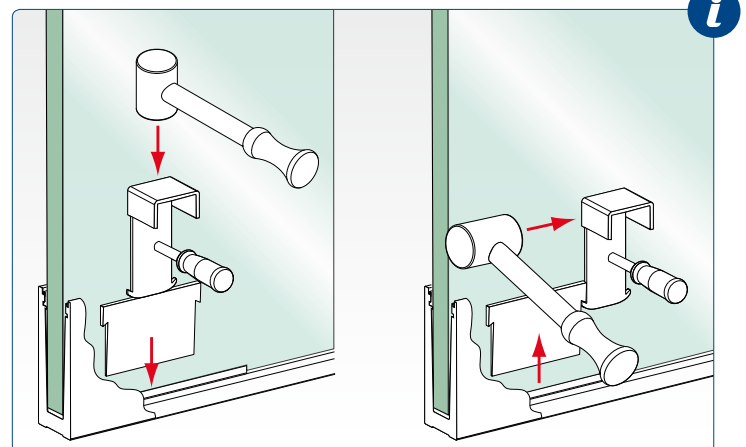


Per vetri di spessore
15 mm, utilizza le guarnizioni
come indicato nella
grafica. For 15-mm-thick
glass, use the rubbers as
shown in the graphic.

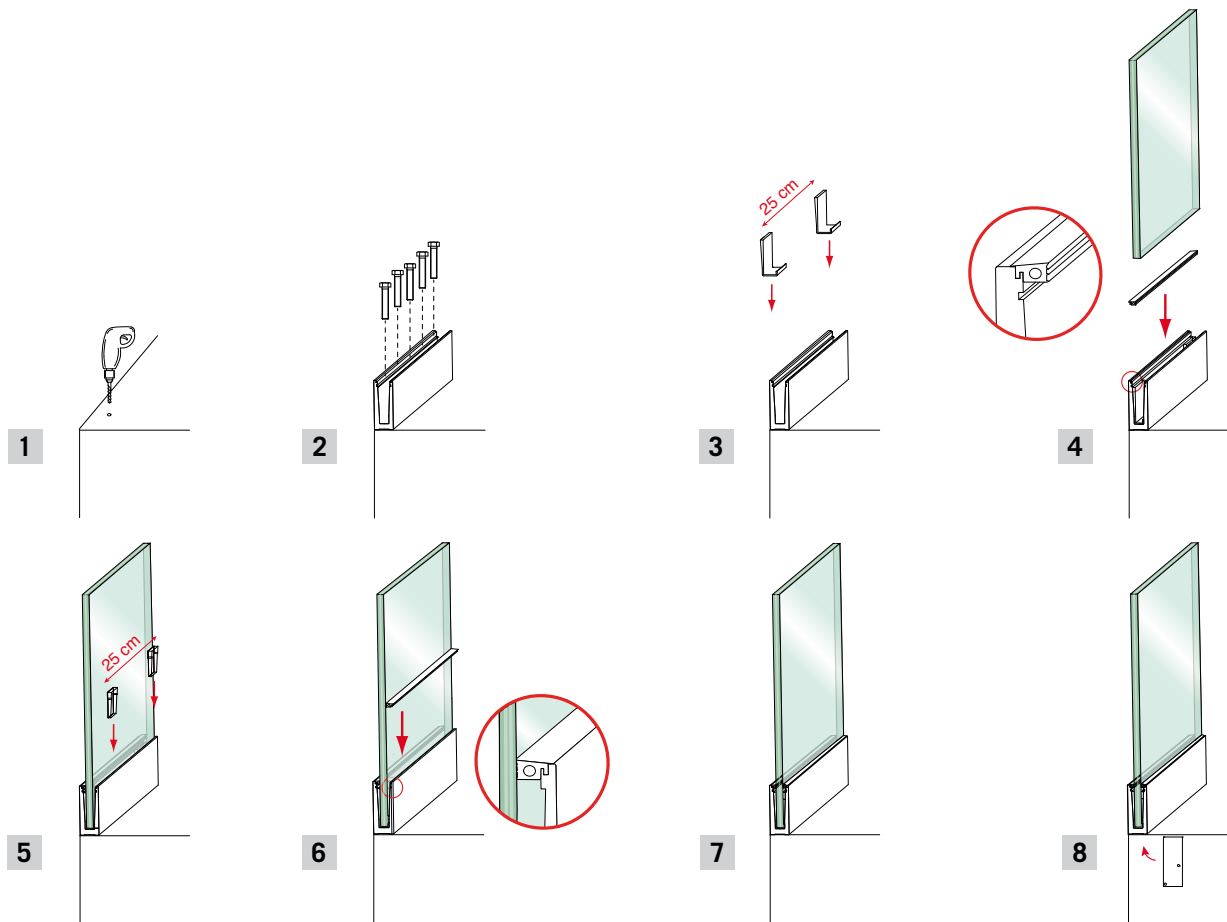
lato/side A E1804620
lato/side B E1803620



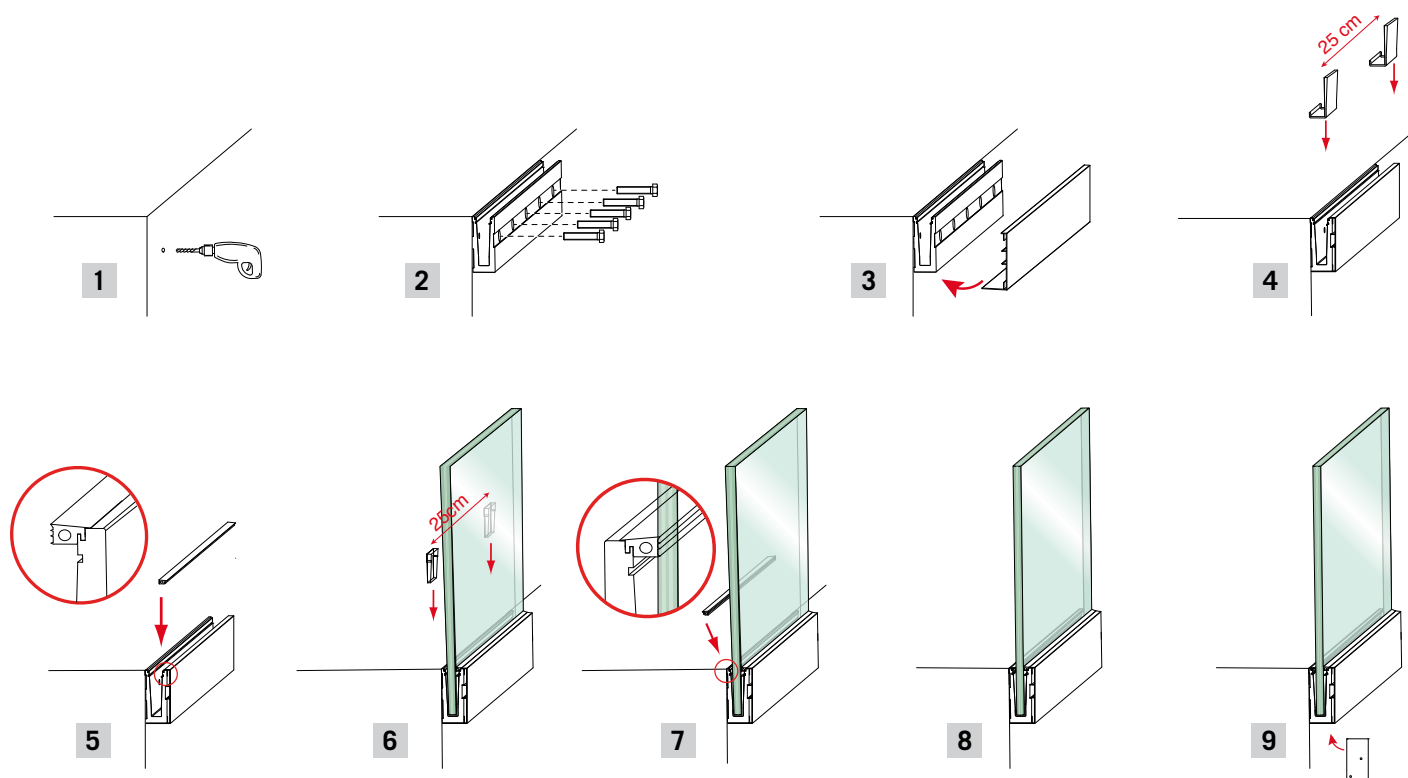
RUBBER	Spessore vetro Glass thickness	L
E1804620	12,76-13,52 mm e/and 15 mm - 1/2" - 13,52" - 19/32"	30 m - 100'
E1803620	16,76-17,52 e/and 19 mm - 21/32" - 11/16" - 3/4"	30 m - 100'
E1806620	20,76 e 21,52 mm - 3/4" and 7/8"	30 m - 100'



INSTALLAZIONE A PAVIMENTO - FLOOR ANCHORAGE INSTALLATION



INSTALLAZIONE A PARETE - WALL ANCHORAGE INSTALLATION





CONDIVIDI LE IMMAGINI DEI TUOI PROGETTI
SULLA NOSTRA PAGINA FACEBOOK:
MOSTRA A TUTTI LA TUA CREATIVITÀ!

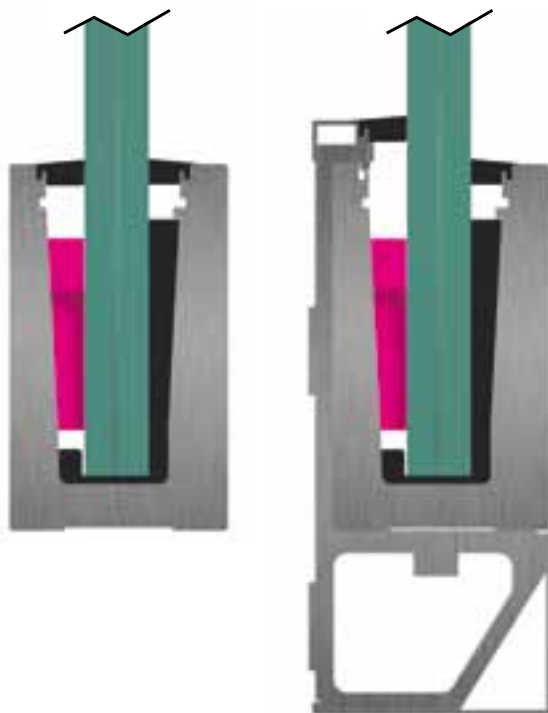
SHARE YOUR PROJECTS' PICTURES
ON OUR FACEBOOK PAGE
SHOW EVERYONE YOUR CREATIVITY!



www.facebook.com/lamdesign.Innovation.architectural.metal



carico di progetto design load	3 kN
carico di rottura ultimate strength	4,5 kN



Progettato specificatamente per luoghi pubblici ad alta frequentazione come stadi, musei, centri commerciali, teatri, auditorium, è in grado di assorbire una forza laterale contro il vetro di 300 kg/ml, rispettando la normativa in termini di sicurezza. Oltre al classico sistema di fissaggio è dotato di un brevettato sistema distanziatore per vetri che ne aumenta la solidità.

It is designed well for high traffic public spaces such as museums, shopping centres, theatres, and auditoriums. It succeeds in absorbing a 300 kg/ml side force against wind and respects security regulation. Not only does it have the usual fastening system, but it is also characterised by a distancing patented system for glass which empowers its solidity.

I profili sono forniti di:

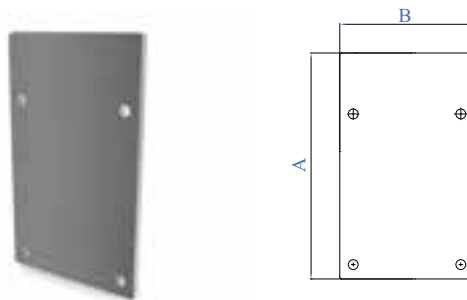
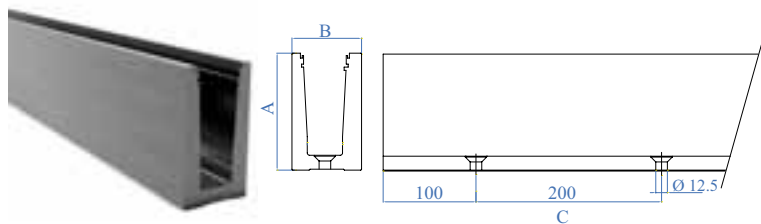
- tappi di chiusura
- distanziali da inserire alla fine di ogni vetro
- distanziali da applicare alla base dei profili per favorire lo scorrimento dei liquidi
- staffe a sbalzo per applicare i profili a parete
- profili di chiusura

Profiles are provided with:

- closure tops
- spacers to insert at the end of each glass
- spacers to apply at the base of each profile to support fluids flow
- supporting bracket to apply wall profiles
- closure profiles

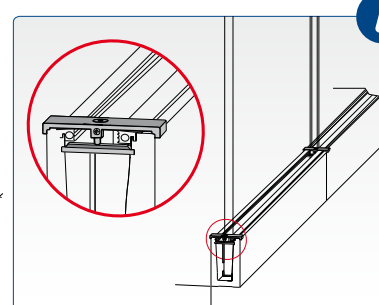
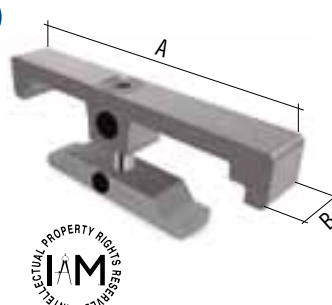
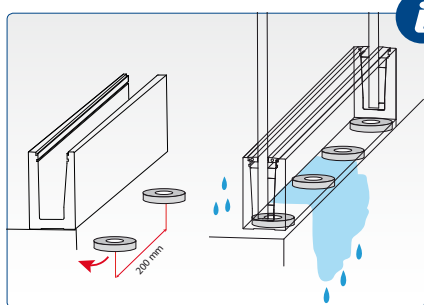
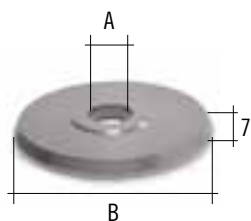


PROFILO 3 kN A PAVIMENTO
3 kN FLOOR FIXING PROFILE



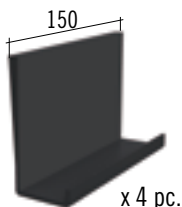
ALUMINIUM	A	B	C
E1800120	126 mm 4 61/64"	75 mm 2 61/64"	3000 mm 9' - 10"

ALUMINIUM	A	B
E1800210	126 mm 4 61/64"	75 mm 2 61/64"



ALUMINIUM	A	B
E1800340	Ø 20 mm 3/4" dia.	Ø 75 mm 2 61/64" dia.

AISI316	A	B
E1800220	85 mm 3 11/32"	15 mm 19/32"

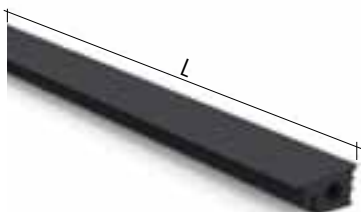


Kit di fissaggio per parapetto di 1 m
Fixing kit for 1 meter baluster

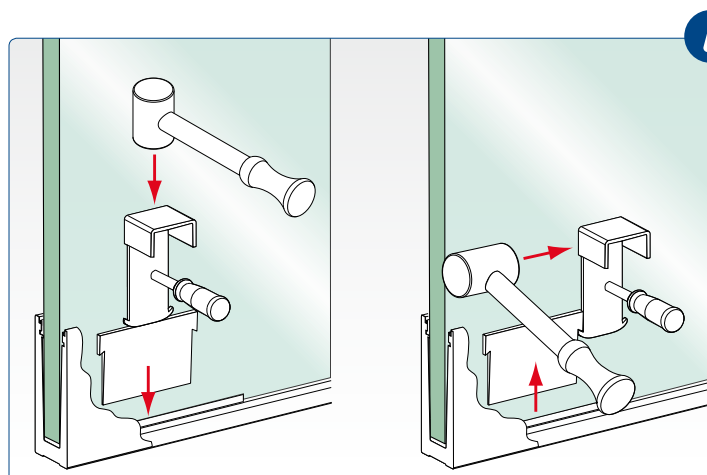


PLASTIC	Spessore vetro Glass thickness
E1801600	20,76 e 21,52 mm - 3/4" and 7/8"
E1802600	24,76 e 25,52 mm - 1" and 1 1/32"
E1803600	31,52 mm - 1 1/4"

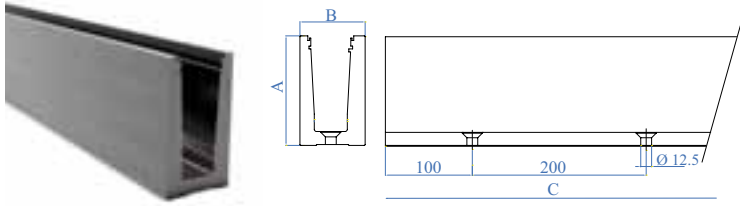
	Descrizione Description
E40588	Strumento per l'inserimento e l'estrazione dei cunei dal profilo Tool for insertion and removal of the wedges from the profile



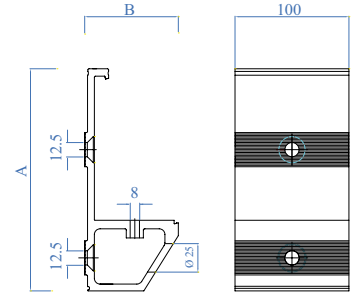
RUBBER	Spessore vetro Glass thickness	L
E1801620	20,76 e 21,52 mm - 3/4" and 7/8"	30 m - 100'
E1802620	24,76 e 25,52 mm - 1" and 1 1/32"	30 m - 100'
E1803620	31,52 mm - 1 1/4"	30 m - 100'



PROFILO 3 kN A PARETE
3 kN WALL FIXING PROFILE



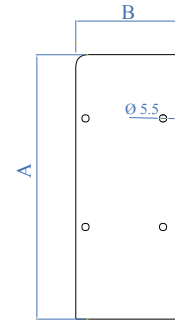
ALUMINIUM	A	B	C
E1800120	126 mm 4 61/64"	75 mm 2 61/64"	3000 mm 9' - 10"



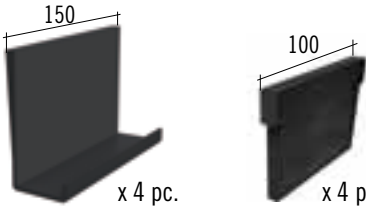
ALUMINIUM	A	B
E1800310	195 mm 7 11/16"	82 mm 3 15/64"



ALUMINIUM	A	B
E1800320	62 mm 2 7/16"	82 mm 3 7/32"



ALUMINIUM	A	B
E1800230	204.52 mm 8 1/16"	82 mm 3 7/32"



x 4 pc.

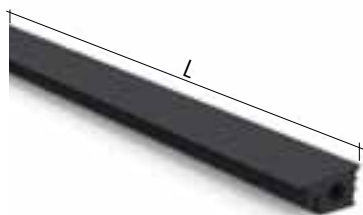
x 4 pc.

Kit di fissaggio per parapetto di 1 m
Fixing kit for 1 meter baluster

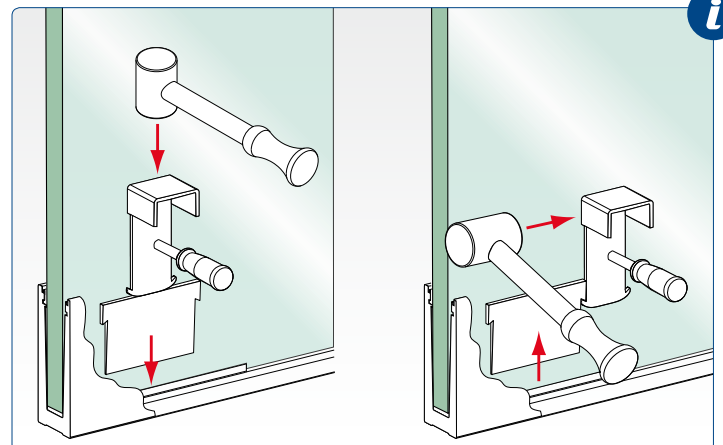
PLASTIC	Spessore vetro Glass thickness
E1801600	20,76 e 21,52 mm - 3/4" and 7/8"
E1802600	24,76 e 25,52 mm - 1" and 1 1/32"
E1803600	31,52 mm - 1 1/4"



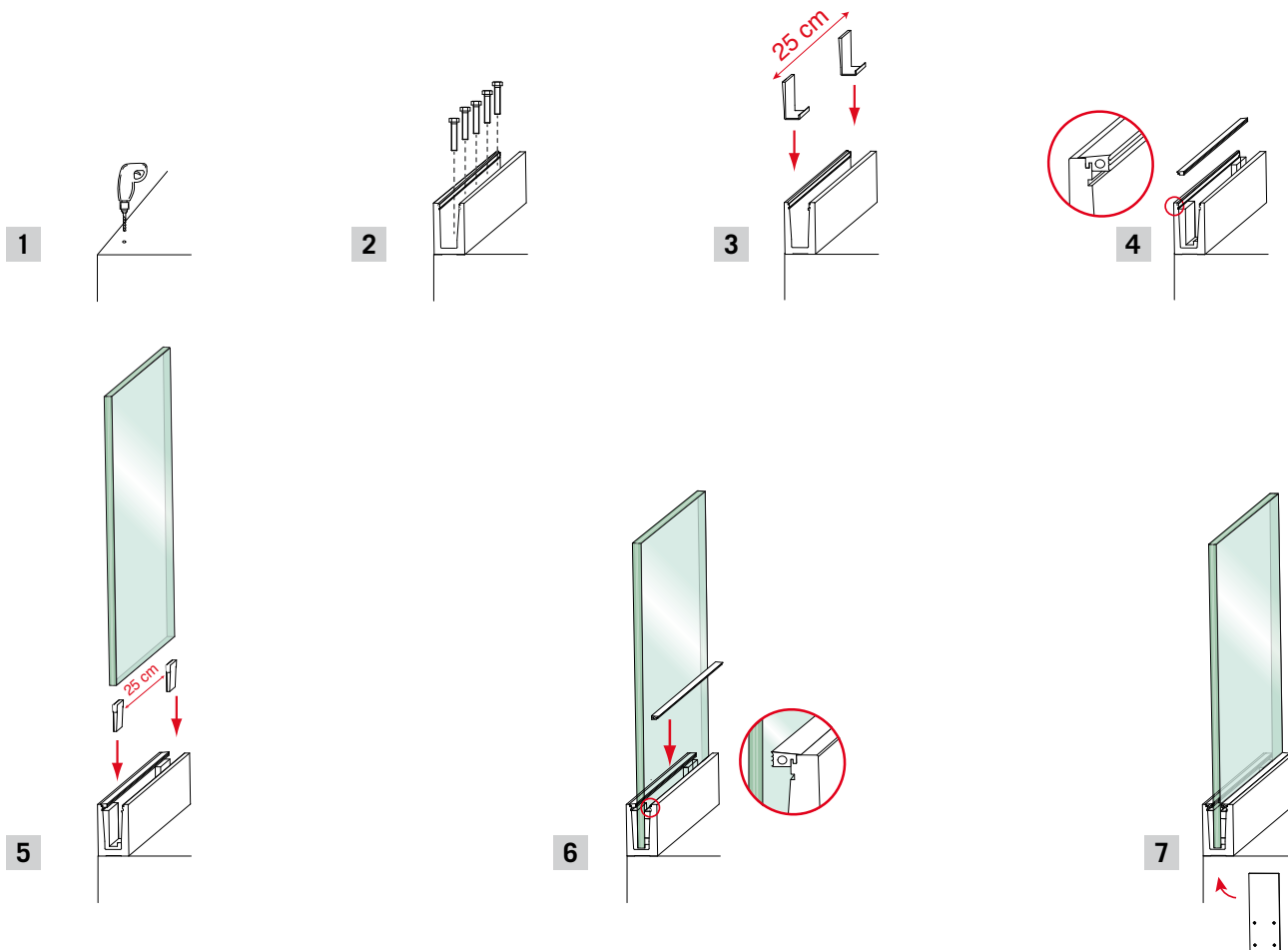
	Descrizione Description
E40588	Strumento per l'inserimento e l'estrazione dei cunei dal profilo Tool for insertion and removal of the wedges from the profile



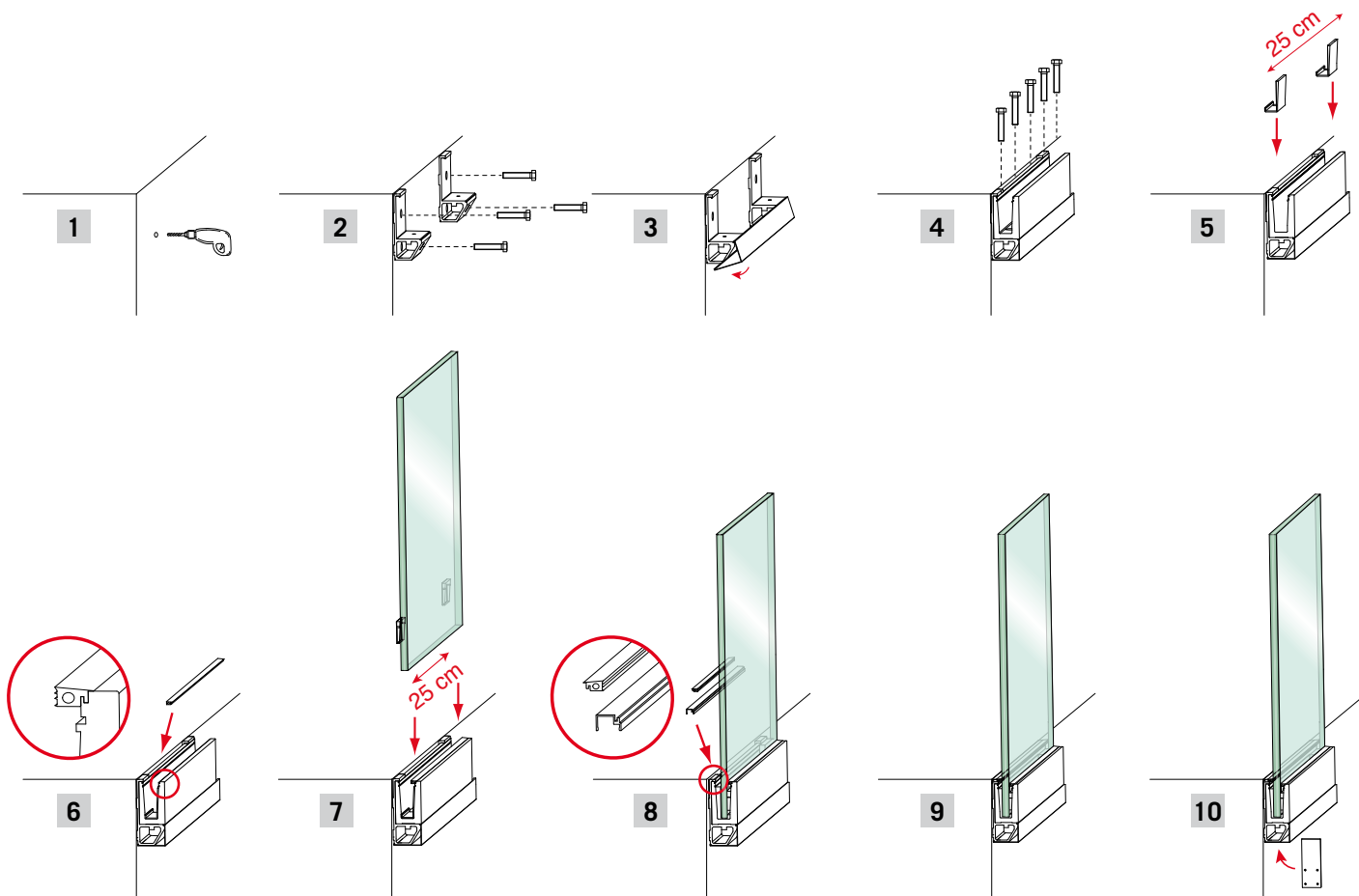
RUBBER	Spessore vetro Glass thickness	L
E1801620	20,76 e 21,52 mm - 3/4" and 7/8"	30 m - 100'
E1802620	24,76 e 25,52 mm - 1" and 1 1/32"	30 m - 100'
E1803620	31,52 mm - 1 1/4"	30 m - 100'



INSTALLAZIONE A PAVIMENTO - FLOOR ANCHORAGE INSTALLATION

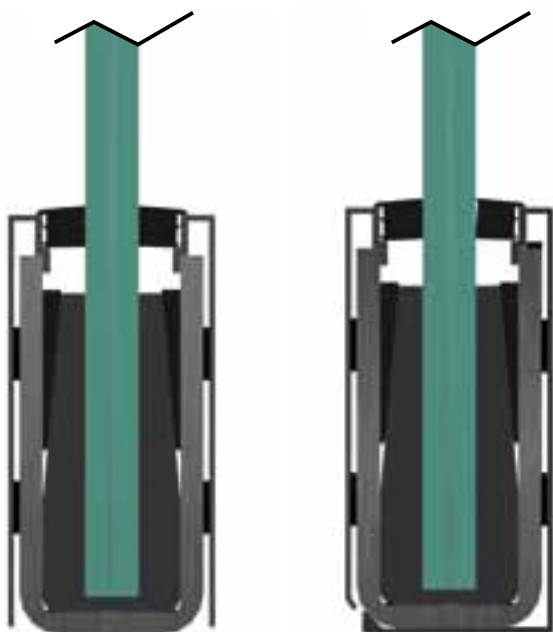


INSTALLAZIONE A PARETE - WALL ANCHORAGE INSTALLATION



TESTED

carico di progetto design load	1 kN
carico di rottura ultimate strength	2 kN



Tra tutti è il Glass U più versatile e semplice da utilizzare. A differenza degli altri sistemi è realizzato principalmente in acciaio pertanto è molto resistente e meno delicato. Disponibile nella versione pre-zincata ma anche nella versione grezza, ideale per essere saldato o incementato a filo pavimento. Dotato di carter di copertura in alluminio con effetto acciaio inox. Indicato per edifici residenziali, case private, camere d'albergo, ristoranti.

It is the most adaptable and easy to use Glass U. It is steel, mainly made, so it is very resistant and less delicate. It is available in a pre-zinc-coated or rough version and it is also works being welded or embedded in concrete. A stainless steel lookalike, aluminum cover carter is provided. Recommended for residential buildings, private houses, hotel rooms, restaurants.

I profili sono forniti di:

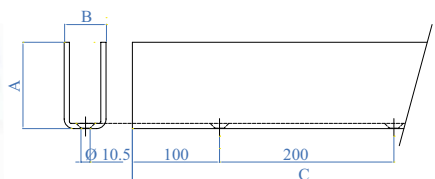
- copertura laterale
- kit di cunei di fissaggio in materiale sintetico
- guarnizioni di chiusura in gomma per vetri di vari spessori indicati in tabella

Profiles are provided with:

- side coverings
- fastening wedges kits in synthetic material
- rubber closure seals for various thickness glass, as in the chart

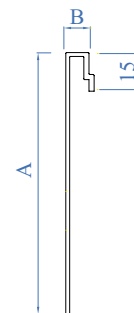
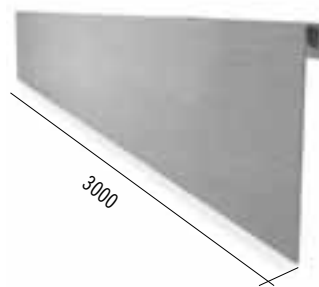


PROFILO A PAVIMENTO
FLOOR FIXING PROFILE

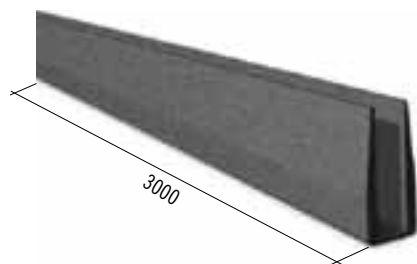


Pre-forato and galvanized - Pre-drilled and galvanized

IRON - ZINC	A	B	C
I1600110	100 mm 3 15/16"	48 mm 1 7/8"	3000 mm 9' - 10"



ALUMINIUM	A	B
I1700320	108,5 mm 4 9/32"	11 mm 7/16"



RUBBER	Spessore vetro Glass thickness
E1999820	12 - 13,52 1/2" - 17/32"
E1999800	16,76 - 17,52 21/32" - 11/16"
E1999810	20,76 - 21,52 13/16" - 27/32"

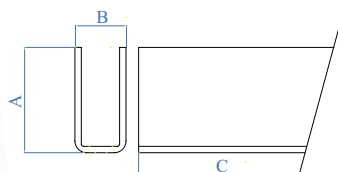


PLASTIC
E1999830



BIADHESIVE TAPE	L Bobina Coil length	Dimensioni Dimensions
E1999892	33 m 108' 3" 13/64"	15 x 1,5 mm 19/32" - 1/16"

RUBBER	L Bobina Coil length	Spessore vetro Glass thickness
E1999870	30 m 98' 5" 3/32"	12 - 13,52 1/2" - 17/32"
E1999850	30 m 98' 5" 3/32"	16,76 - 17,52 21/32" - 11/16"
E1999860	30 m 98' 5" 3/32"	20,76 - 21,52 13/16" - 27/32"



Senza fori e non zincato - Without hole and not galvanized

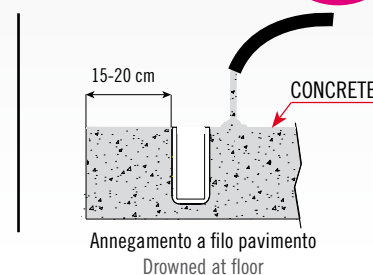
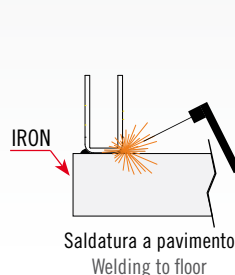
GREZZO - RAW	A	B	C
F1600110	100 mm 3 15/16"	48 mm 1 7/8"	3000 mm 9' - 10"

ANCORAGGI ALTERNATIVI - ALTERNATIVE ANCHORAGE

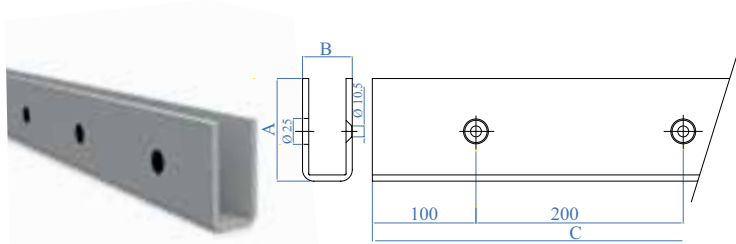
La versione in ferro grezzo del profilo può essere saldata direttamente alla putrella, a pavimento o a parete oppure **annegata a filo pavimento**. In quest'ultimo caso il suo **carico di progetto aumenta fino a 3 kN**. Le dimensioni del cordolo consigliate sono di 15-20 cm per la classe di calcestruzzo C20/25, con inserimento di armatura opportuna. **Per ottenere una resistenza di 3kN /m si sceglia accuratamente lo spessore del vetro relativo**

Rough iron version profile can be welded to I-beam, floor or wall, or embedded in the floor. In this last example **the project load increases until 3 kN**. Recommended kerb sizes are 15-20 cm for C20/25 concrete class, with suitable scaffolding addition. **To obtain a resistance of 3kN/m please choose carefully the relevant glass thickness**

3 kN

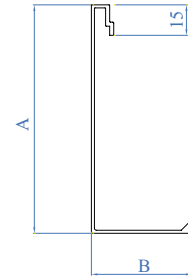
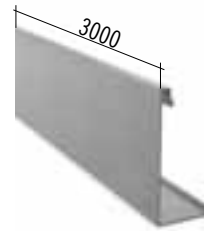


PROFILO A PARETE
WALL FIXING PROFILE

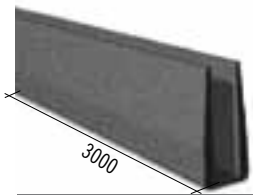


Pre-forato and galvanized - Pre-drilled and galvanized

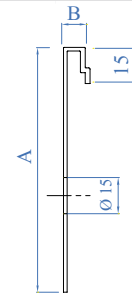
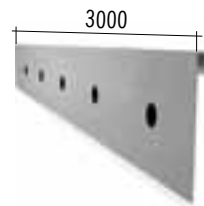
IRON - ZINC	A	B	C
I1700210	100 mm 3 15/16"	48 mm 1 7/8"	3000 mm 9' - 10"



ALUMINIUM	A	B
I1700310	112,5 mm 4 7/16"	49,5 mm 1 15/16"



RUBBER	Vetro Glass
E1999820	12 - 13,52 1/2" - 17/32"
E1999800	16,76 - 17,52 21/32" - 11/16"
E1999810	20,76 - 21,52 13/16" - 27/32"



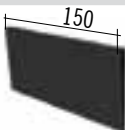
ALUMINIUM	A	B
I1700325	108,5 mm 4 9/32"	11 mm 7/16"



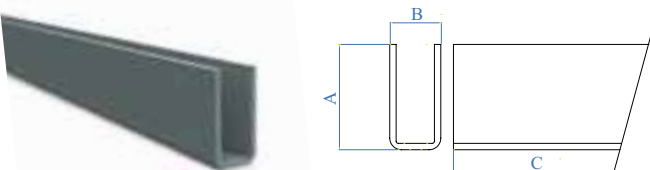
RUBBER	L Bobina Coil length	Spessore vetro Glass thickness
E1999870	30 m 98' 5" 3/32"	12 - 13,52 1/2" - 17/32"
E1999850	30 m 98' 5" 3/32"	16,76 - 17,52 21/32" - 11/16"
E1999860	30 m 98' 5" 3/32"	20,76 - 21,52 13/16" - 27/32"



BIADHESIVE TAPE	L Bobina Coil length	Dimensioni Dimensions
E1999892	33 m 108' 3" 13/64"	15 x 1,5 mm 19/32" - 1/16"
E1999891	33 m 108' 3" 13/64"	6 x 1,5 mm 1/4" - 1/16"



PLASTIC
E1999830



Senza fori e non zincato - Without hole and not galvanized

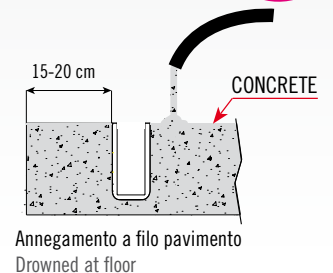
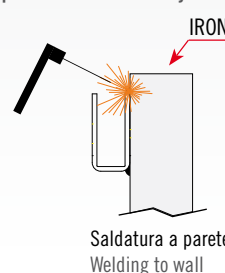
GREZZO - RAW	A	B	C
F1600110	100 mm 3 15/16"	48 mm 1 7/8"	3000 mm 9' - 10"

ANCORAGGI ALTERNATIVI - ALTERNATIVE ANCHORAGE

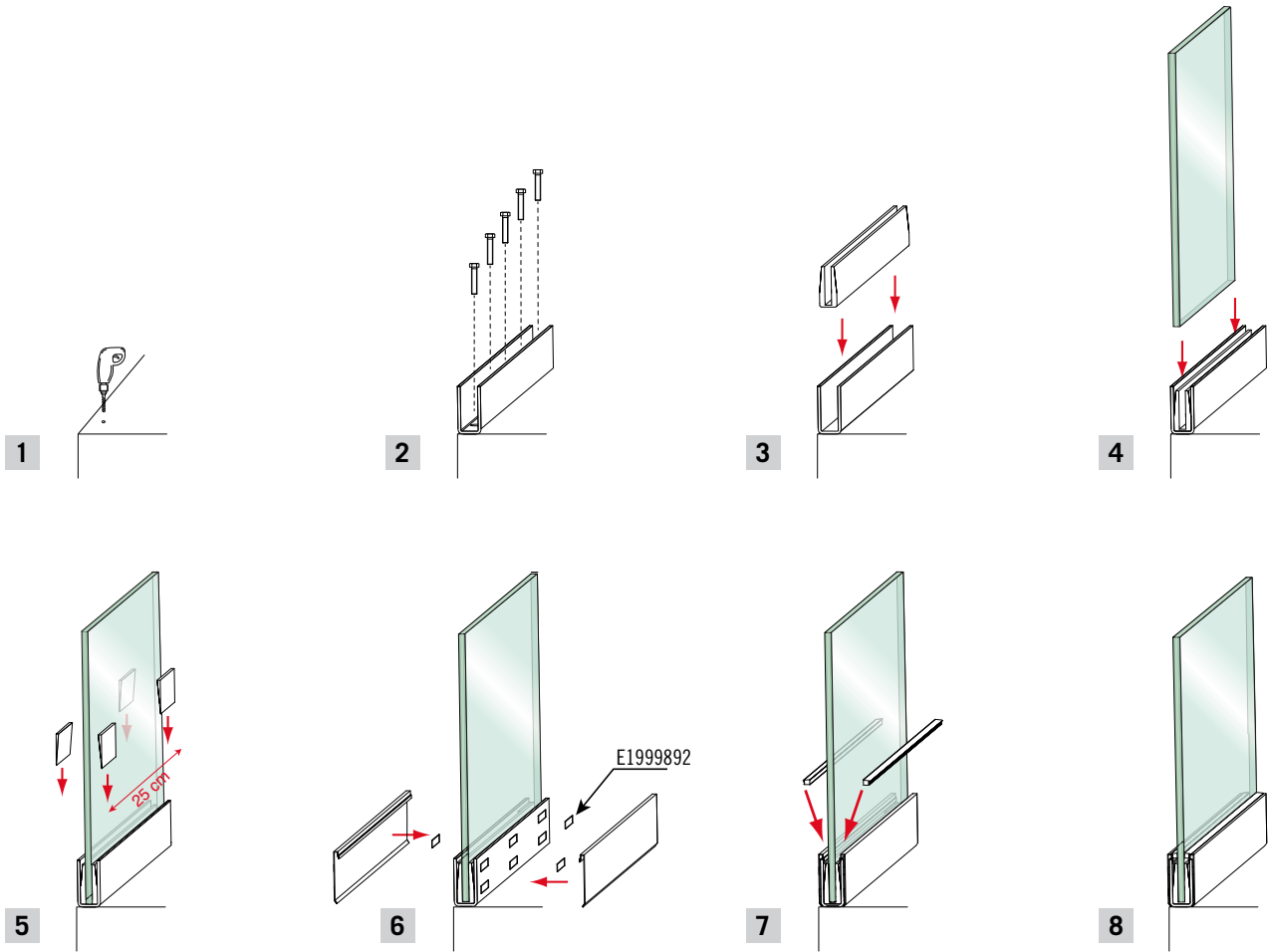
La versione in ferro grezzo del profilo può essere saldata direttamente alla putrella, a pavimento o a parete oppure **annegata a filo pavimento**. In quest'ultimo caso il suo **carico di progetto aumenta fino a 3 kN**. Le dimensioni del cordolo consigliate sono di 15-20 cm per la classe di calcestruzzo C20/25, con inserimento di armatura opportuna. **Per ottenere una resistenza di 3kN/m si sceglia accuratamente lo spessore del vetro relativo**

Rough iron version profile can be welded to I-beam, floor or wall, or **embedded in the floor**. In this last example **the project load increases until 3 kN**. Recommended kerb sizes are 15-20 cm for C20/25 concrete class, with suitable scaffolding addition. **To obtain a resistance of 3kN/m please choose carefully the relevant glass thickness**

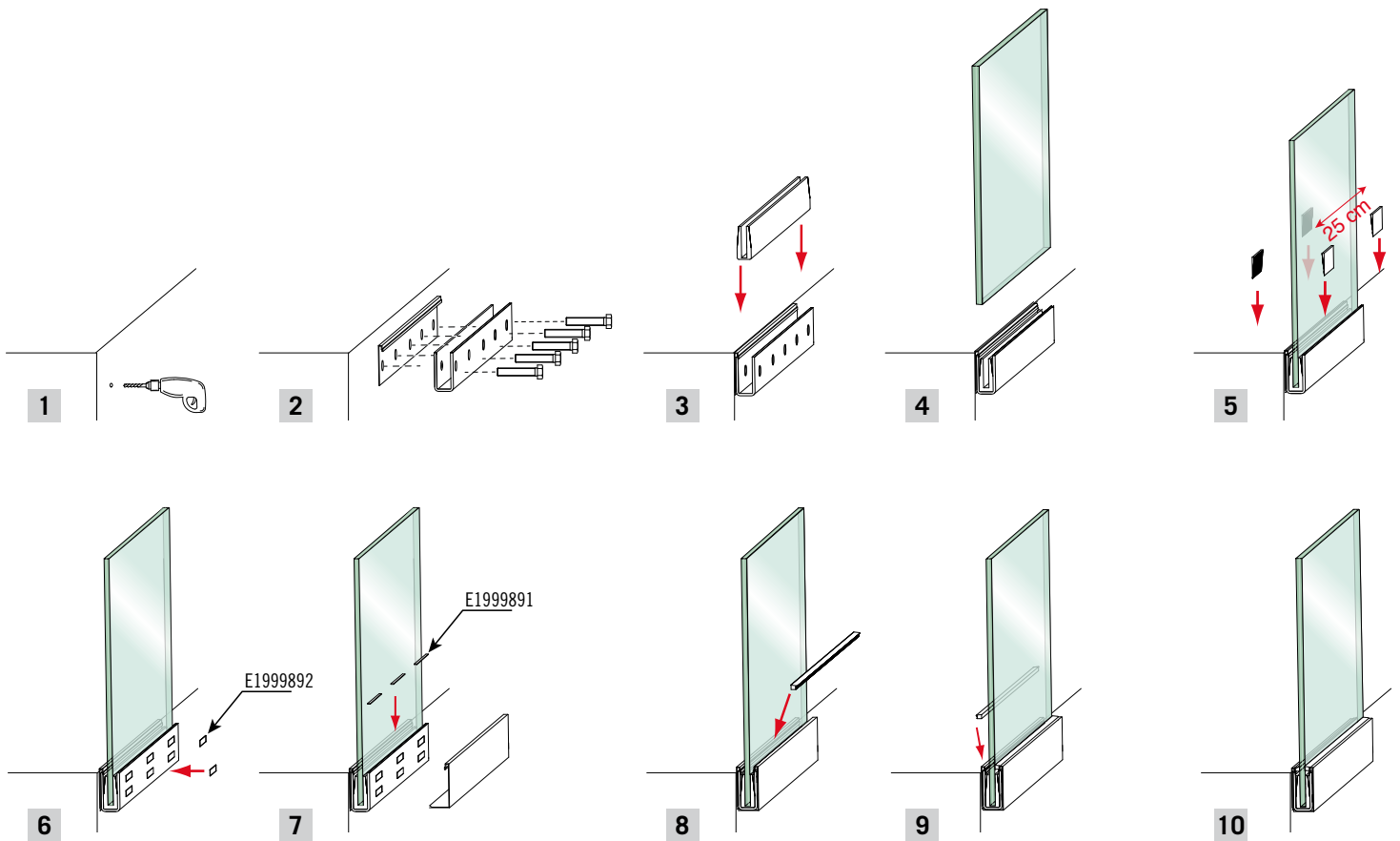
3 kN

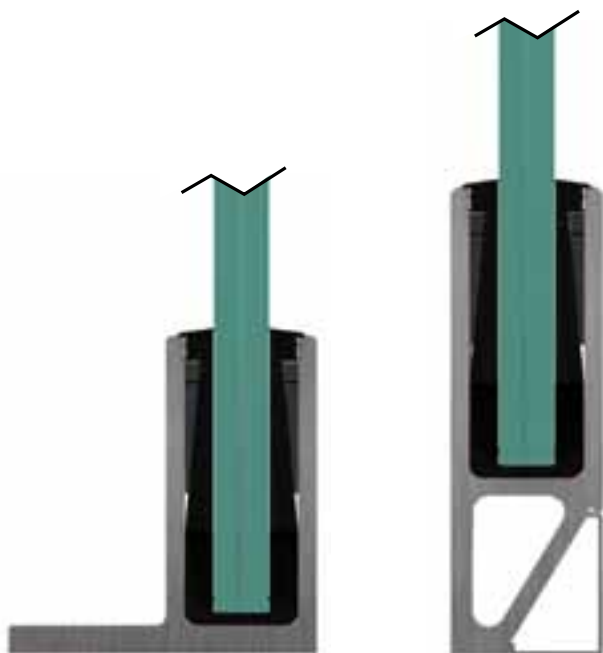


INSTALLAZIONE A PAVIMENTO - FLOOR ANCHORAGE INSTALLATION



INSTALLAZIONE A PARETE - WALL ANCHORAGE INSTALLATION





Il sistema originale dal quale si è sviluppata tutta la gamma di prodotti Glass U. Glass U Classic, leggero e semplice da assemblare, è ideale per uso residenziale ma anche per la maggior parte dei luoghi pubblici a bassa frequentazione. Può essere installato a vista.

Glass U Classic is the original system, light and easy to set up. It is perfect both for housing and light traffic public spaces. It can be installed in view.

I profili sono forniti di:

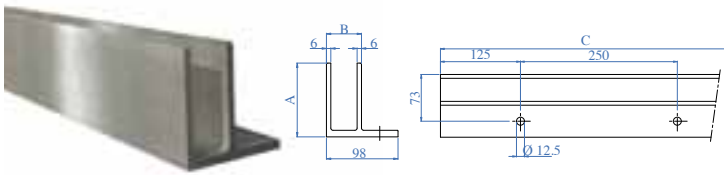
- angolari per una giunzione a 90°
- tappi di chiusura
- carter di copertura fori per il profilo a parete
- kit di cunei di fissaggio in materiale sintetico
- guarnizioni di chiusura in gomma per vetri di vari spessori indicati in tabella

Profiles are provided with:

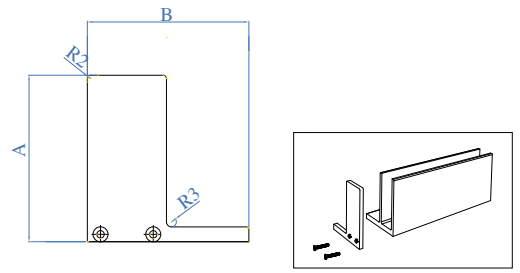
- Angle brackets for a 90° junction
- closure tops
- hole covering carter for wall profile
- fastening wedges kits in synthetic material
- rubber closure seals for various glass thickness, as in the chart



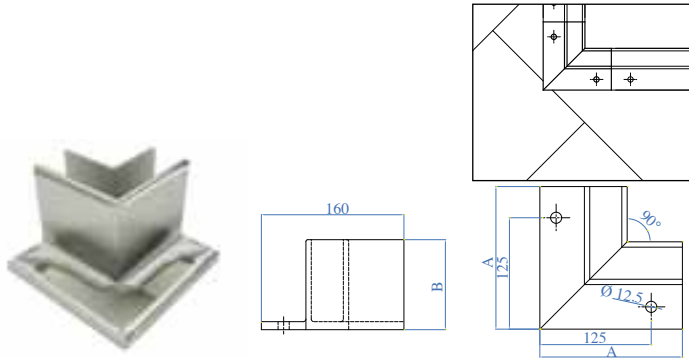
PROFILO A PAVIMENTO
FLOOR FIXING PROFILE



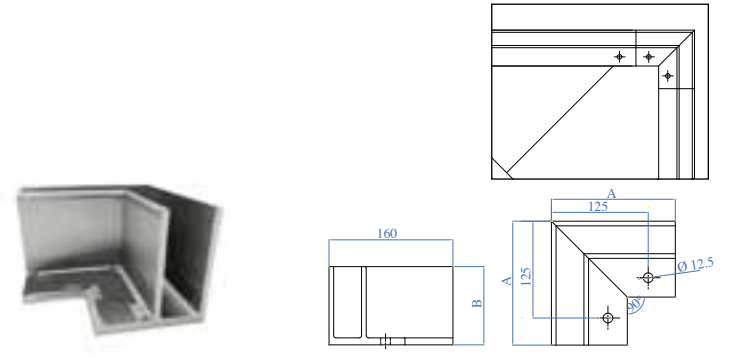
ALUMINIUM	A	B	C
E1600100	101 mm 3 31/32"	48 mm 1 7/8"	3000 mm 9' - 10"



ALUMINIUM	A	B
E1600700	101 mm 3 31/32"	98 mm 3 27/32"

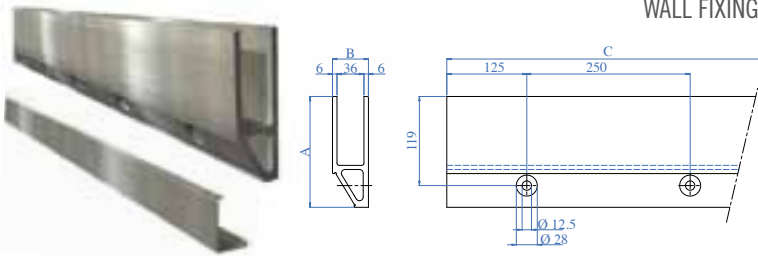


ALUMINIUM	A	B
E1600600	160 mm 6 5/16"	101 mm 3 31/32"

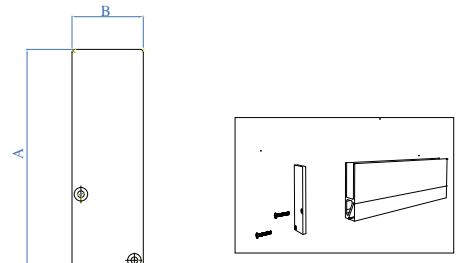


ALUMINIUM	A	B
E1600500	160 mm 6 5/16"	101 mm 3 31/32"

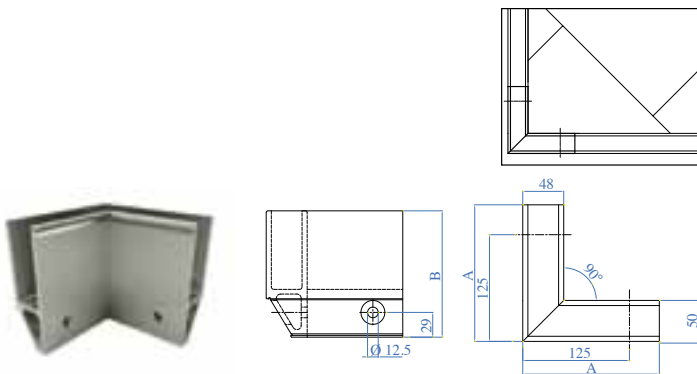
PROFILO A PARETE
WALL FIXING PROFILE



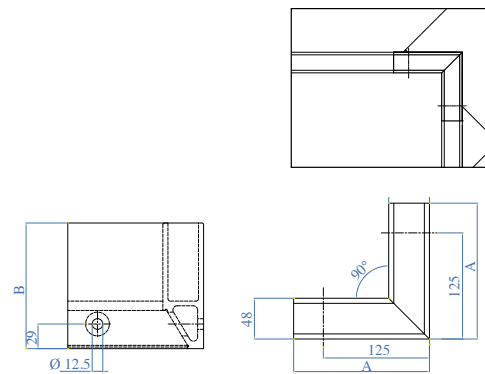
ALUMINIUM	A	B	C
E1700200	148 mm 5 13/16"	48 mm 1 7/8"	3000 mm 9' - 10"



ALUMINIUM	A	B
E1700700	148 mm 5 13/16"	48 mm 1 7/8"



ALUMINIUM	A	B
E1700500	160 mm 6 5/16"	148 mm 5 13/16"



ALUMINIUM	A	B
E1700600	160 mm 6 5/16"	148 mm 5 13/16"



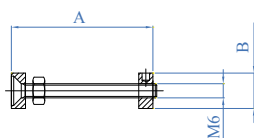
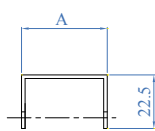
RUBBER	Spessore vetro Glass thickness
E1999820	12 - 13,52 1/2" - 17/32"
E1999800	16,76 - 17,52 21/32" - 11/16"
E1999810	20,76 - 21,52 13/16" - 27/32"



RUBBER	L Bobina Coil length	Spessore vetro Glass thickness
E1999870	30 m 98' 5" 3/32"	12 - 13,52 1/2" - 17/32"
E1999850	30 m 98' 5" 3/32"	16,76 - 17,52 21/32" - 11/16"
E1999860	30 m 98' 5" 3/32"	20,76 - 21,52 13/16" - 27/32"

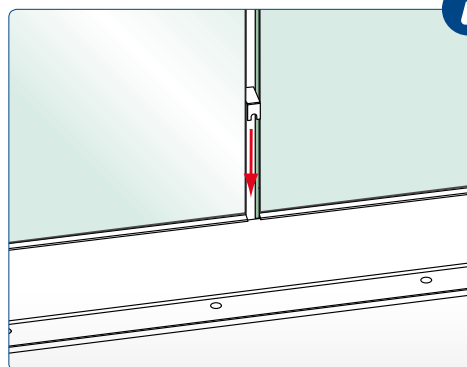


PLASTIC	Spessore vetro Glass thickness
E1999830	12 - 13,52 1/2" - 17/32"
	16,76 - 17,52 21/32" - 11/16"
	20,76 - 21,52 13/16" - 27/32"



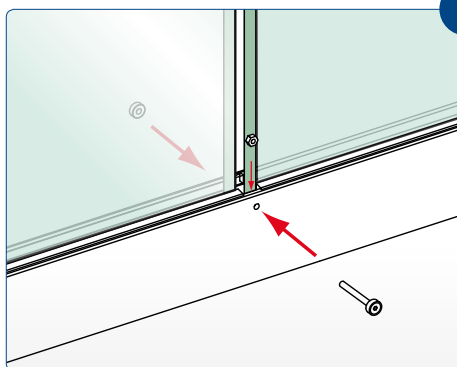
AISI304	A	B
E1999990	36 mm 1 13/32"	15 mm 19/32"

AISI304	A	B
E1999995	60 mm 2 3/8"	Ø 15 mm 19/32" dia.



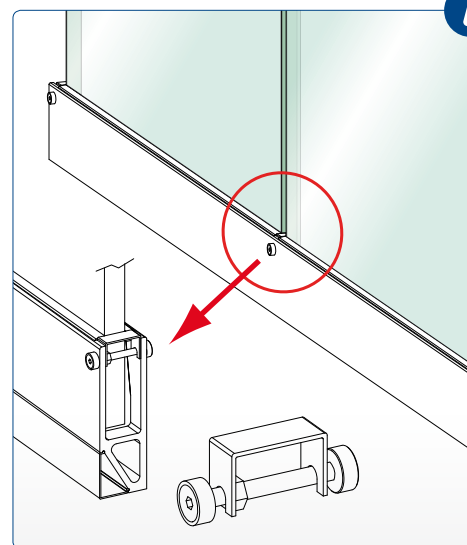
Copricanale da inserire tra un vetro e l'altro l'accessorio ha solo una funzione estetica.

Duct-cover to be inserted between a glass and the other accessory, it only has an aesthetic function



Tirante da applicare al profilo pre-forato per garantire una maggiore tenuta e robustezza.

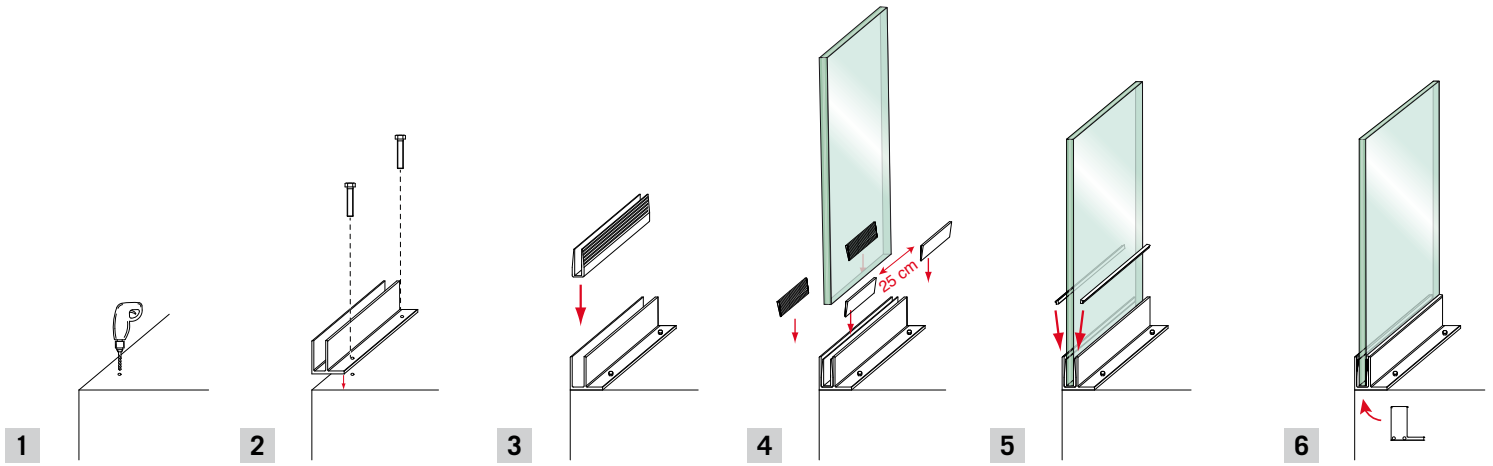
Tie-beam to be applied to pre-drilled profile to ensure greater resistance and sturdiness.



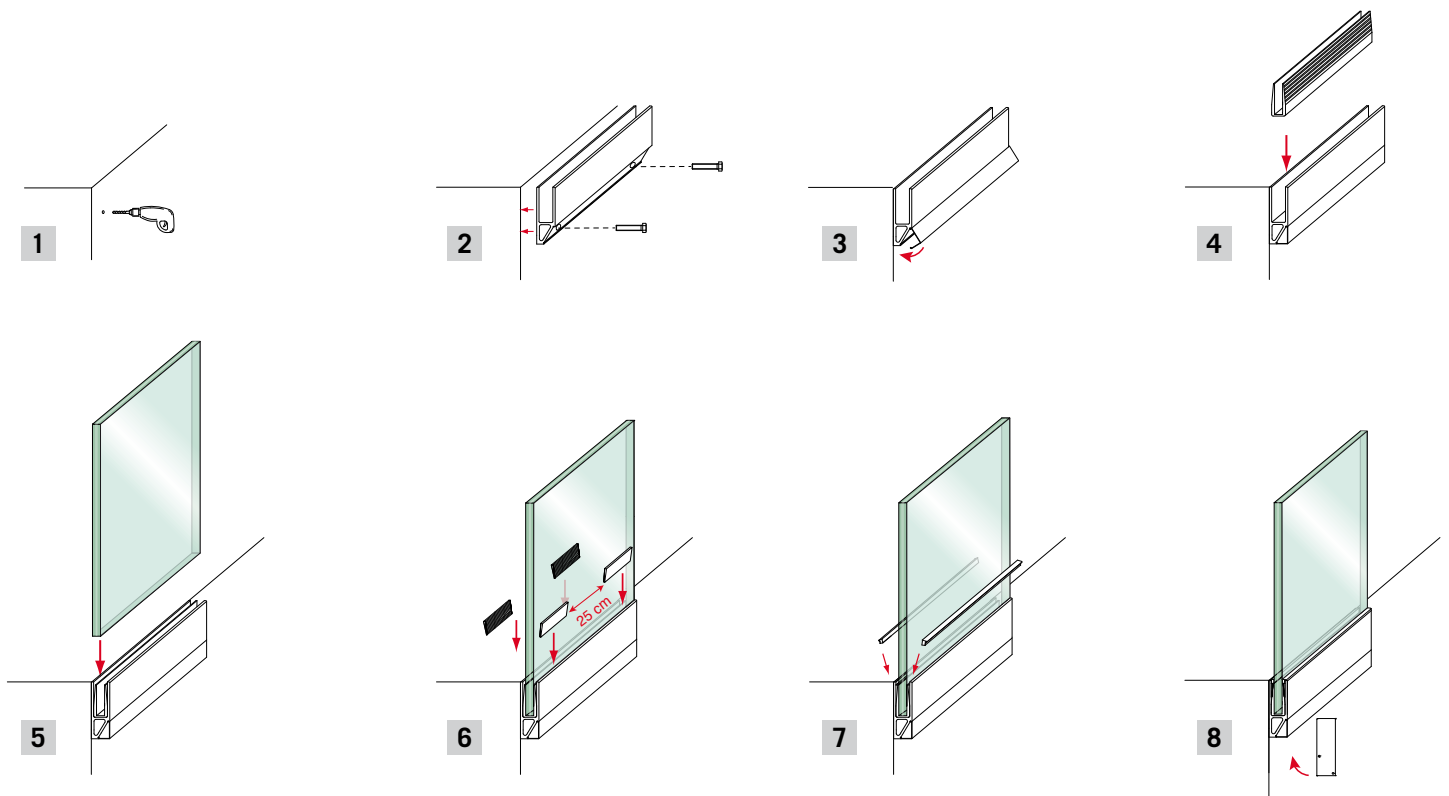
Entrambi gli articoli possono essere usati separatamente oppure combinati.

Both items can be used separately or combined.

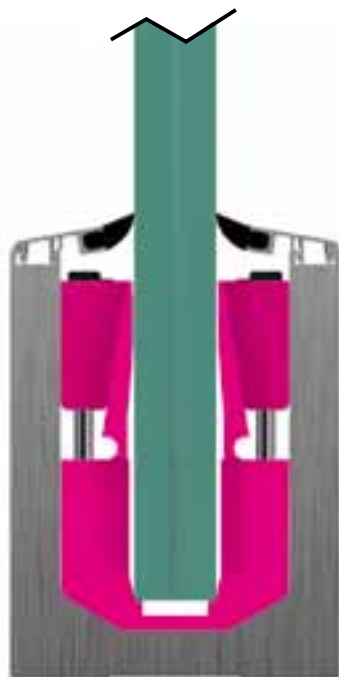
INSTALLAZIONE A PAVIMENTO - FLOOR ANCHORAGE INSTALLATION



INSTALLAZIONE A PARETE - WALL ANCHORAGE INSTALLATION



carico di progetto design load	2 kN
carico di rottura ultimate strength	3 kN



Ultimo nato nella famiglia GLASS U, “Precision” rivoluziona il concetto di fissaggio del vetro. Grazie al sistema brevettato di fissaggio concepito dal Team di IAM Design permette di regolare facilmente l’inclinazione del vetro, velocizzando così di molto la posa. Ideale per edifici pubblici.

“Precision” is the final design in our Glass U family and it represents a revolution in glass fastening concept. Thanks to a fastening patented system designed by our IAM Design Team, it is possible to regulate glass grade and reach a fast laying. This is perfect for glass professionals. Recommended for public buildings.

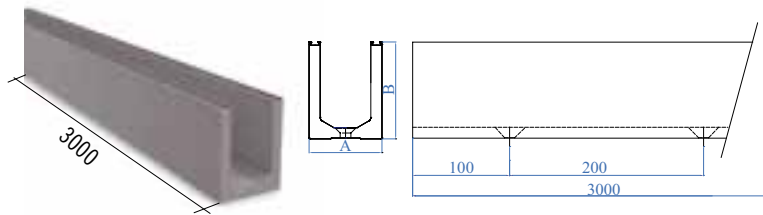
I profili sono forniti di:

- guarnizioni in alluminio e gomma
- kit per il bloccaggio e inclinazione del vetro

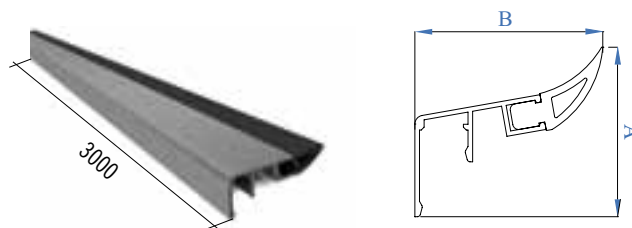
Profiles are provided with:

- aluminium and rubber seals
- lock off and glass grade kit

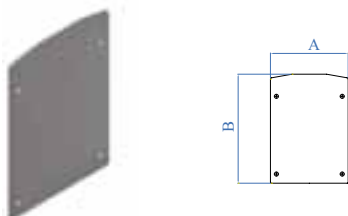




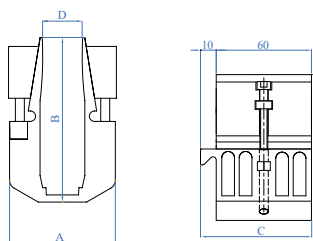
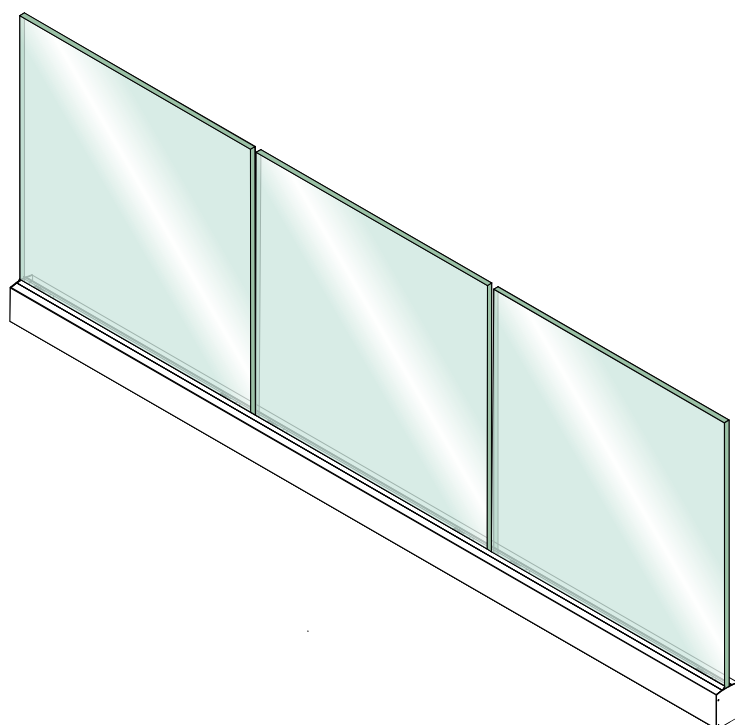
ALUMINIUM	A	B
E1800150	81 mm 3 3/16"	113 mm 4 7/16"



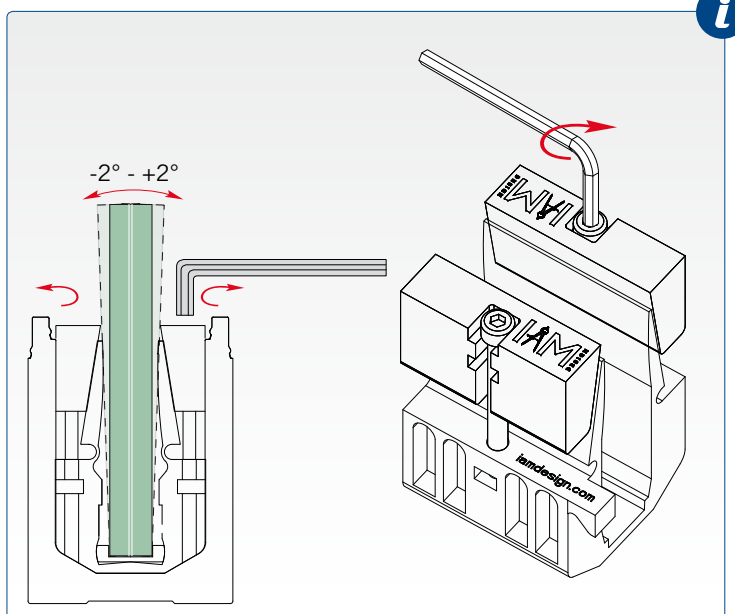
ALUMINIUM RUBBER	A	B
E1800630	29 mm 1 5/32"	32,5 mm 1 9/32"

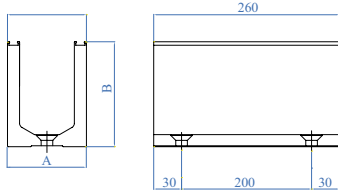
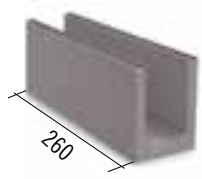


ALUMINIUM	A	B
E1800250	81 mm 3 3/16"	118 mm 4 21/32"

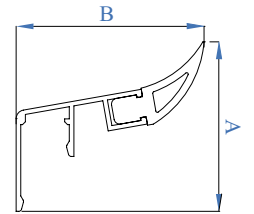
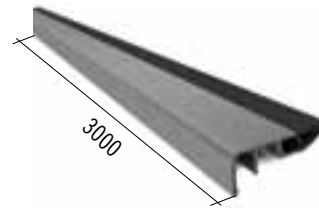


PLASTIC	A	B	C	D
E1999010	59 mm 2 5/16"	92 mm 3 5/8"	70 mm 2 3/4"	da 16,76 a 21,52 from 21/32" to 7/8"

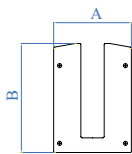




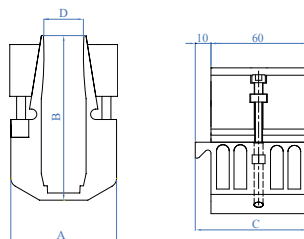
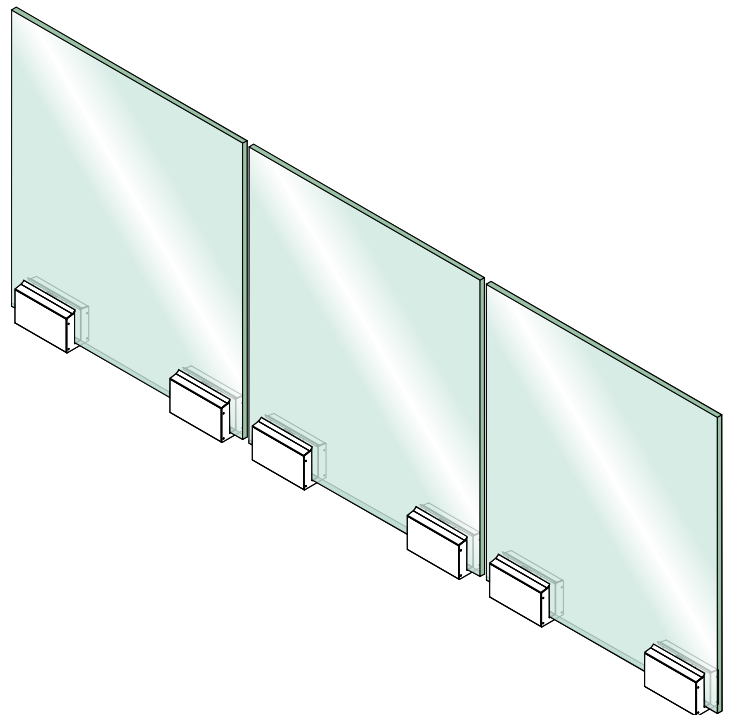
ALUMINIUM	A	B
E1800160	81 mm 3 3/16"	113 mm 4 7/16"



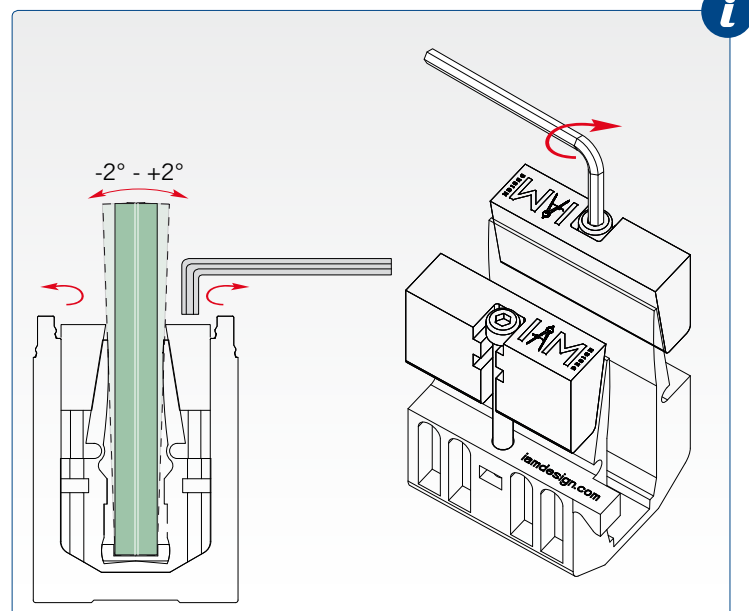
ALUMINIUM RUBBER	A	B
E1800630	29 mm 1 5/32"	32,5 mm 1 9/32"



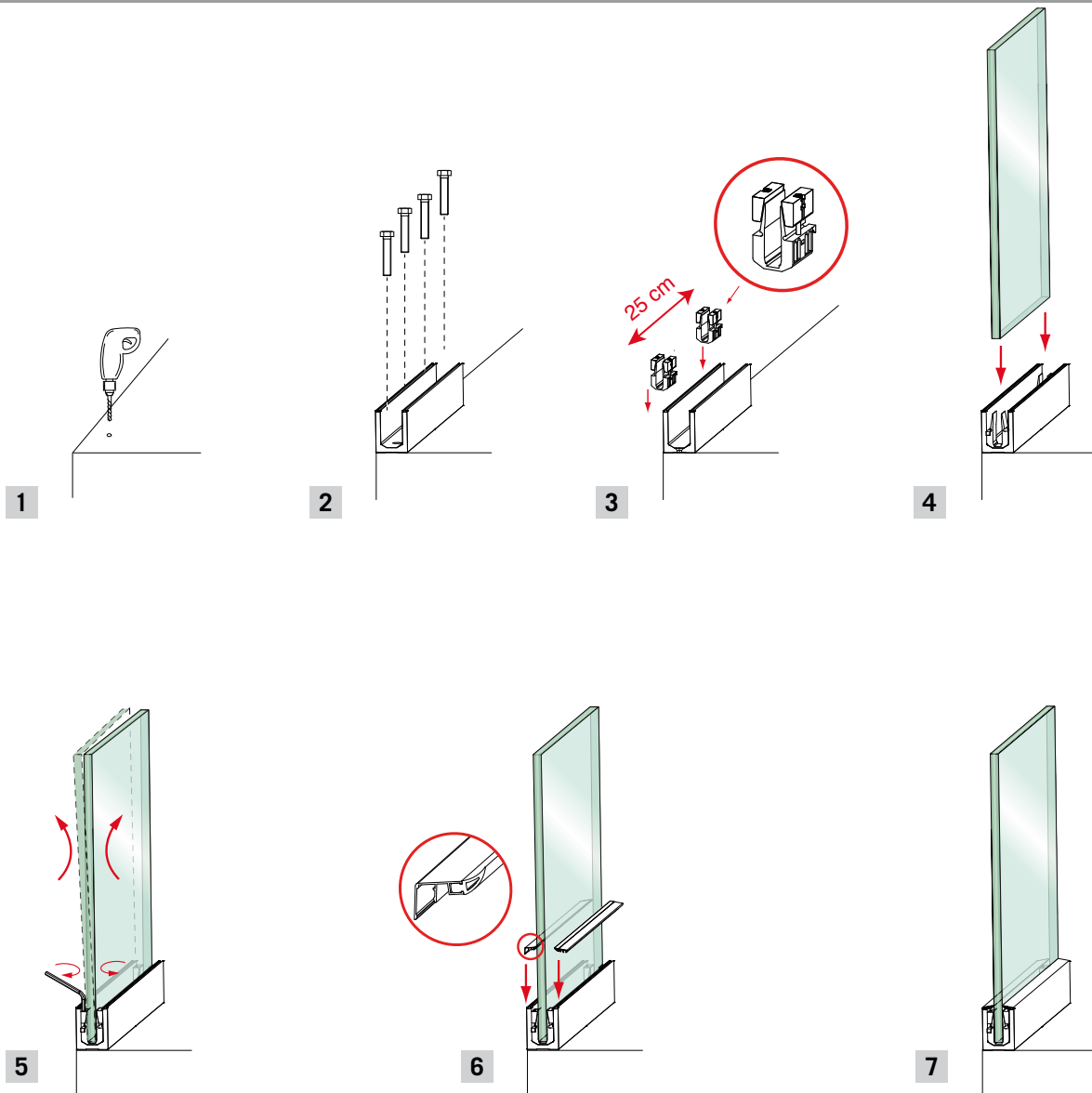
ALUMINIUM	A	B
E1800260	81 mm 3 3/16"	118 mm 4 21/32"



PLASTIC	A	B	C	D
E1999010	59 mm 2 5/16"	92 mm 3 5/8"	70 mm 2 3/4"	da 16,76 a 21,52 mm from 21/32" to 7/8"



INSTALLAZIONE A PAVIMENTO - FLOOR ANCHORAGE INSTALLATION



Glass U 2 kN

Installazione a pavimento
Floor anchorage installation



	Altezza del carico dal pavimento (mm) Load height from the floor (mm)	Carico (kN/m) Load (kN/m)	Tipo di vetro Glass type
1000	0,5	13,52	
	1	17,52	
	2	21,52	
1100	1	17,52	
	2	21,52	
1200	1	17,52	
	2	21,52	

Ancoraggio meccanico - Mechanical anchoring		
Classe qualità calcestruzzo Concrete quality class	Min. distanza dal bordo (mm) Minimum distance from the edge (mm)	Distanza ancoraggi (mm) Anchoring distance (mm)
C20/25	70	400
C20/25	70	200
C20/25	70	200
C20/25	70	200
C20/25	70	200
C20/25	80	200
C20/25	80	200

Ancoraggio chimico - Chemical anchoring		
Classe qualità calcestruzzo Concrete quality class	Min. distanza dal bordo (mm) Minimum distance from the edge (mm)	Distanza ancoraggi (mm) Anchoring distance (mm)
C20/25	70	400
C20/25	70	200
C20/25	80	200
C20/25	70	200
C20/25	80	200
C20/25	80	200
C20/25	90	200

Installazione a parete
Wall anchorage installation



	Altezza del carico dal pavimento (mm) Load height from the floor (mm)	Carico (kN/m) Load (kN/m)	Tipo di vetro Glass type
1000	0,5	13,52	
	1	17,52	
	2	21,52	
1100	1	17,52	
	2	21,52	
1200	1	17,52	
	2	21,52	
1500	1	17,52	
	2	21,52	

Ancoraggio meccanico - Mechanical anchoring		
Classe qualità calcestruzzo Concrete quality class	Min. distanza dal bordo (mm) Minimum distance from the edge (mm)	Distanza ancoraggi (mm) Anchoring distance (mm)
C20/25	70	400
C20/25	70	200
C20/25	70	200
C20/25	70	200
C20/25	80	200
C20/25	80	200
C20/25	80	200
C25/30	100	200
C25/30	100	200

Ancoraggio chimico - Chemical anchoring		
Classe qualità calcestruzzo Concrete quality class	Min. distanza dal bordo (mm) Minimum distance from the edge (mm)	Distanza ancoraggi (mm) Anchoring distance (mm)
C20/25	70	400
C20/25	70	200
C20/25	80	200
C20/25	70	200
C20/25	80	200
C20/25	80	200
C20/25	90	200
C25/30	100	200
C25/30	100	200

Glass U 3 kN

Installazione a pavimento
Floor anchorage installation



Consigliato stratificato DG41
Suggested stratified DG41

	Altezza del carico dal pavimento (mm) Load height from the floor (mm)	Carico (kN/m) Load (kN/m)	Tipo di vetro Glass type
1000	1	17,52	
	2	21,52	
1100	1	17,52	
	2	21,52	
1200	1	17,52	
	2	21,52	

Ancoraggio meccanico - Mechanical anchoring		
Classe qualità calcestruzzo Concrete quality class	Min. distanza dal bordo (mm) Minimum distance from the edge (mm)	Distanza ancoraggi (mm) Anchoring distance (mm)
C20/25	70	200
C20/25	70	200
C20/25	70	200
C20/25	70	200
C20/25	80	200
C20/25	80	200

Ancoraggio chimico - Chemical anchoring		
Classe qualità calcestruzzo Concrete quality class	Min. distanza dal bordo (mm) Minimum distance from the edge (mm)	Distanza ancoraggi (mm) Anchoring distance (mm)
C20/25	70	200
C20/25	80	200
C20/25	70	200
C20/25	80	200
C20/25	80	200
C20/25	90	200

Installazione a parete
Wall anchorage installation



Consigliato stratificato DG41
Suggested stratified DG41

	Altezza del carico dal pavimento (mm) Load height from the floor (mm)	Carico (kN/m) Load (kN/m)	Tipo di vetro Glass type
1000	2	17,52	
	3	21,52	
1100	2	17,52	
	3	21,52	
1200	2	17,52	
	3	21,52	
1500	2	17,52	
	3	21,52	

Ancoraggio meccanico - Mechanical anchoring		
Classe qualità calcestruzzo Concrete quality class	Min. distanza dal bordo (mm) Minimum distance from the edge (mm)	Distanza ancoraggi (mm) Anchoring distance (mm)
C25/30	100	200
C25/30	100	200
C25/30	100	200
C25/30	100	200
C25/30	110	200
C25/30	110	200
C25/30	110	200
C25/30	120	200
C25/30	120	200

Ancoraggio chimico - Chemical anchoring		
Classe qualità calcestruzzo Concrete quality class	Min. distanza dal bordo (mm) Minimum distance from the edge (mm)	Distanza ancoraggi (mm) Anchoring distance (mm)
C25/30	100	200
C25/30	100	200
C25/30	110	200
C25/30	110	200
C25/30	110	200
C25/30	110	200
C25/30	120	200
C25/30	120	200

Glass Steel

Installazione a pavimento
Floor anchorage installation



se annegato all'interno
del calcestruzzo
If drowned inside the
concrete

	Altezza del carico dal pavimento (mm) Load height from the floor (mm)	Carico (kN/m) Load (kN/m)	Tipo di vetro Glass Type
1000	0,5	13,52	
	1	17,52	
1100	0,5	13,52	
	1	17,52	
1200	0,5	13,52	
	1	17,52	
1200	3	21,52	

Ancoraggio meccanico - Mechanical anchoring		
Classe qualità calcestruzzo Concrete quality class	Min. distanza dal bordo (mm) Minimum distance from the edge (mm)	Distanza ancoraggi (mm) Anchoring distance (mm)
C20/25	70	400
C20/25	70	200
C20/25	70	400
C20/25	70	200
C20/25	70	400
C20/25	70	200
C25/30	100	-

Ancoraggio chimico - Chemical anchoring		
Classe qualità calcestruzzo Concrete quality class	Min. distanza dal bordo (mm) Minimum distance from the edge (mm)	Distanza ancoraggi (mm) Anchoring distance (mm)
C20/25	70	400
C20/25	70	200
C20/25	70	400
C20/25	70	200
C20/25	70	400
C20/25	70	200
25/30	70	-

Installazione a parete
Wall anchorage installation



1000	0,5	13,52
	1	17,52
1100	0,5	13,52
	1	17,52
1200	0,5	13,52
	1	17,52

Ancoraggio meccanico - Mechanical anchoring		
C20/25	70	400
C20/25	70	200
C20/25	70	400
C20/25	70	200
C20/25	70	400
C20/25	70	200

Ancoraggio chimico - Chemical anchoring		
C20/25	70	400
C20/25	70	200
C20/25	70	400
C20/25	70	200
C20/25	70	400
C20/25	70	200

Installazione a pavimento
Floor anchorage installation



1000	0,5	13,52
	1	17,52
1100	0,5	13,52
	1	17,52
1200	0,5	13,52
	1	17,52

Ancoraggio meccanico - Mechanical anchoring		
C20/25	70	250/500
C20/25	70	250
C20/25	70	250/500
C20/25	70	250
C20/25	70	250/500
C20/25	70	250

Ancoraggio chimico - Chemical anchoring		
C20/25	70	250/500
C20/25	70	250
C20/25	70	250/500
C20/25	70	250
C20/25	70	250/500
C20/25	70	250

Glass Classic

Installazione a parete
Wall anchorage installation



1000	0,5	13,52
	1	17,52
1100	0,5	13,52
	1	17,52
1200	0,5	14,52
	1	17,52

Ancoraggio meccanico - Mechanical anchoring		
C20/25	70	250/500
C20/25	70	250
C20/25	70	250/500
C20/25	70	250
C20/25	70	250/500
C20/25	70	250

Ancoraggio chimico - Chemical anchoring		
C20/25	70	250/500
C20/25	70	250
C20/25	70	250/500
C20/25	70	250
C20/25	70	250/500
C20/25	70	250

CALCESTRUZZO

Per ottenere un calcestruzzo con buone qualità specifiche, sia la norma UNI EN 206-1 che la norma UNI 11104, stabiliscono le condizioni minimi operative da seguire. Il calcestruzzo è suddiviso in categorie in funzione della qualità: ad ogni categoria corrisponde una diversa resistenza alla trazione (strappo) dell'ancoraggio. Inoltre la resistenza dipende se il calcestruzzo è fessurato o non fessurato e dall'idoneità del tassello.

C20/25 C30/37
C25/30 C35/45

CONCRETE

UNI EN 206-1 and UNI 11104 regulations impose minimum requirements of high-grade concrete. Depending on quality, concrete is divided into different categories: every category is equivalent to a specific resistance to its anchoring traction.

Resistance also depends on the concrete cracked (or not) and on the dowel suitability.

C20/25 C30/37
C25/30 C35/45



La normativa UNI 7697:2014 impone l'utilizzo di vetro stratificato di sicurezza per parapetti, pavimenti e scale in vetro
UNI 7697:2014 regulation imposes the use of security stratified glass for balconies.

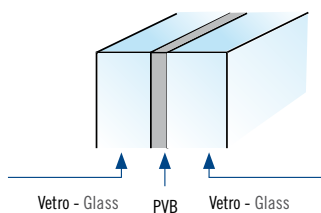
VETRO TEMPRATO - TEMPERED GLASS

Quello della tempra è un processo termico che induce uno stato di precompressione sulle superfici del vetro grazie al quale si ottiene una riduzione dei microdifetti presenti; una volta temprato il vetro sviluppa una resistenza a flessione di circa 4 volte superiore a quella di un tradizionale vetro float. Un altro vantaggio che deriva da questo trattamento è che, in caso di rottura, si producono frammenti di piccola dimensione con bordi non taglienti.

Tempering is a heat treating that produces a pre-compression condition on glass surfaces; a reduction of micro blemishes is therefore achieved. After being tempered, glass develops a resistance that is four times higher than a traditional float glass. Another advantage is that, in case of breakage, you will have little fragments without sharp edges.

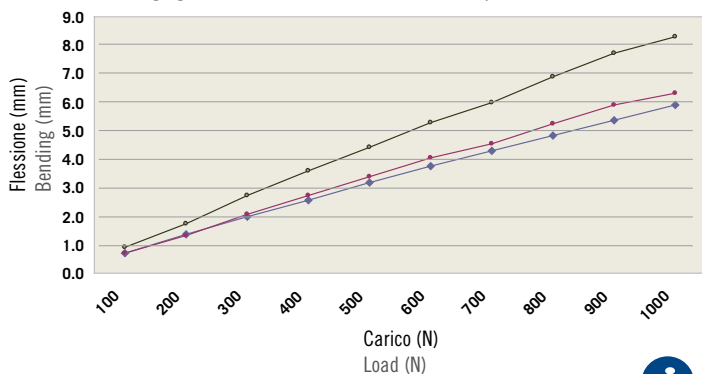


In caso di rottura il vetro temprato produce piccoli frammenti non taglienti.
In case of breakage, tempered glass implies little fragments that are not sharp.



Vetro - Glass PVB Vetro - Glass

Flessione vs carico al centro del campione
Bending against the load in the middle of the sample



VETRO STRATIFICATO - LAMINATED GLASS

Unendo due o più strati di vetro temprato alternato a un foglio plastico, si ottiene un pannello composito nel quale, in caso di rottura, i frammenti restano coesi. L'intercalare di materiale plastico, generalmente PVB (polivinilbutirrale), viene interposto fra due o più lastre mediante particolari processi che consentono di ottenere un pannello composito dalle prestazioni meccaniche, termiche ed acustiche modificate nonché migliorate.

By joining two or more tempered glass layers and alternating them with a plastic sheet, we get a composite panel, where, in case of a break, fragments remain cohesive. Plastic materials which are usually in PVB, are interjected between two or more layers, thanks to specific processes that allow them to reach a composite panel with mechanical, heat and acoustic performances.

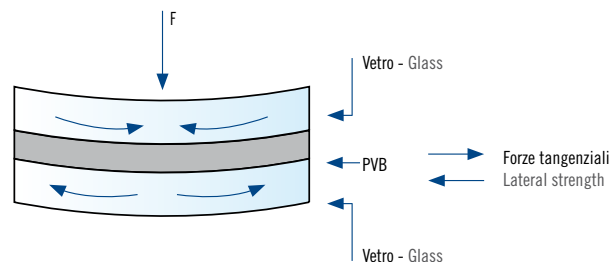


Dettaglio di vetro composto da due lastre alternate da un intercalare in materiale plastico.
Glass details are composed of two layers, which are alternated to plastic materials

Il vetro stratificato con plastici più rigidi rispetto al PVB può sopportare carichi maggiori oppure, a parità di resistenza, può avere uno spessore minore.

Glass that is stratified with firmer plastic than PVB can sustain major loads or, on equal resistance, it can have a thinner depth.

- Vetro float 10 mm / Float glass 10 mm
- Vetro stratificato 5 mm + 1,52 mm DG +5 mm / Stratified glass 5 mm + 1,52 mm DG +5 mm
- Vetro stratificato 5 mm + 1,52 mm RB +5 mm / Stratified glass 5 mm + 1,52 mm RB +5 mm



Vantaggi del vetro stratificato di sicurezza in caso di rottura:

Advantages of security stratified glass in case of breakage:

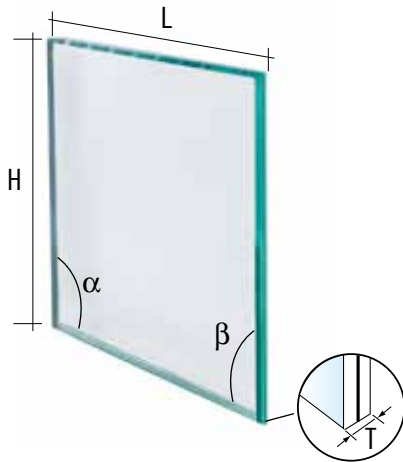
- frammenti e schegge sono trattenuti dal plastico
- rimane in opera anche dopo la rottura e può essere sostituito successivamente
- riduzione della caduta di frammenti pericolosi su cose e/o persone
- riduzione del rischio d'infortunio causato da impatto umano
- aumentata resistenza meccanica allo sfondamento ed alla penetrazione
- fragments and splinters pinned by plastics
- it stands even after a break and it can be replaced later
- Decreased fall of dangerous fragments on people and/or things
- Decreased injury risk caused by human impact
- Increased mechanical resistance to break-through and penetration



DG: PVB plastificato avente un modulo di taglio di 300 MPa contro i 3 MPa del PVB normale
RB: resina utilizzata nel trattamento di unione di due vetri temprati
DG: Plastic coated PVB with a 300 MPa cut module, against the 3 MPa of the ordinary one.
RB: Resin used in tempered glass union process



Richiedi il tuo vetro specifico Ask for your specific glass



Quantità-Quantity _____ mm

Altezza-Height **H** _____ mm

Larghezza-Width **L** _____ mm

α _____

β _____

Spessore/Thickness **T**



- 6 mm 1/4"
- 8 mm 5/16"
- 10 mm 3/8"
- 12 mm 1/2"
- 15 mm 19/32"
- Altro-Other _____



- 6,76 mm 1/4"
- 8,76 mm 11/32
- 9,52 mm 3/8"
- 12,76 mm 1/2"
- 16,76 mm 5/8"
- 17,52 mm 2/3"
- 21,52 mm 2/3"
- Altro-Other _____

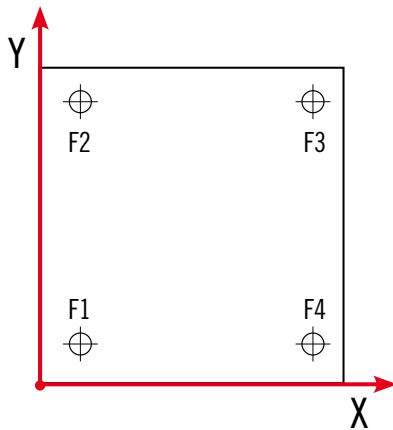
Senza fori - Without holes

Con fori - With holes

N.fori-Holes: _____

Ø/dia.fori-Holes: _____ mm

Posizionamento fori (x-y):
Holes position (x-y): _____ mm



Posizione Centre of the hole	X	Y
F1	_____ mm	_____ mm
F2	_____ mm	_____ mm
F3	_____ mm	_____ mm
F4	_____ mm	_____ mm

Nome/Name _____

Azienda/Company _____

Via, n./Street, nr. _____

Cap., Città/Postcode, City, Country _____

Telefono/Telephone _____

Fax _____

E-mail _____

Partita IVA/V.A.T. code _____

PER UN PREVENTIVO COMPILA QUESTA PAGINA E SPEDISCI LA VIA FAX O E-MAIL - FOR A QUOTE, COMPLETE FORM AND SEND TO IND.I.A. BY FAX OR E-MAIL



www.aalco.co.uk
www.iamdesign.com

ABERDEEN

Tel 01224 854810
Fax 01224 871982
e-mail aberdeen@aalco.co.uk

GLASGOW

Tel 0141 6463200
Fax 0141 6463260
e-mail glasgow@aalco.co.uk

NORWICH

Tel 01603 787878
Fax 01603 789999
e-mail norwich@aalco.co.uk

AYLESBURY

Tel 01296 461700
Fax 01296 339923
e-mail aylesbury@aalco.co.uk

HULL

Tel 01482 626262
Fax 01482 626263
e-mail hull@aalco.co.uk

NOTTINGHAM

Tel 0115 9882600
Fax 0115 9882636
e-mail nottingham@aalco.co.uk

BELFAST

Tel 02890 838838
Fax 02890 837837
e-mail belfast@aalco.co.uk

LEEDS

Tel 0113 2763300
Fax 0113 2760382
e-mail leeds@aalco.co.uk

BIRMINGHAM

Tel 0121 5853600
Fax 0121 5856864
e-mail birmingham@aalco.co.uk

CHEPSTOW

Tel 01291 638638
Fax 01291 638600
e-mail chepstow@aalco.co.uk

LIVERPOOL

Tel 0151 2073551
Fax 0151 2072657
e-mail liverpool@aalco.co.uk

SOUTHAMPTON

Tel 02380 875200
Fax 02380 875275
e-mail southampton@aalco.co.uk

MANCHESTER

Tel 01204 863456
Fax 01204 863430
e-mail manchester@aalco.co.uk

STOKE

Tel 01782 375700
Fax 01782 375701
e-mail stoke@aalco.co.uk

DYFED

Tel 01269 842044
Fax 01269 845276
e-mail dyfed@aalco.co.uk

NEWCASTLE

Tel 0191 4911133
Fax 0191 4911177
e-mail newcastle@aalco.co.uk

SWANLEY

Tel 01322 610900
Fax 01322 610910
e-mail swanley@aalco.co.uk

ESSEX

Tel: +44 (0)1268 884200
Fax: +44 (0)1268 884220
email: essex@aalco.co.uk



Also available
in Ireland

DUBLIN

Tel +353 (0) 1 629 8600
Fax +353 (0) 1 629 9200
e-mail: dublin@amari-dublin.com

CORK

Tel +353 (0) 21 431 0520
Fax +353 (0) 21 431 0519
e-mail: cork@amari-cork.com