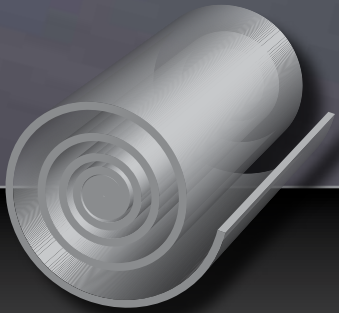
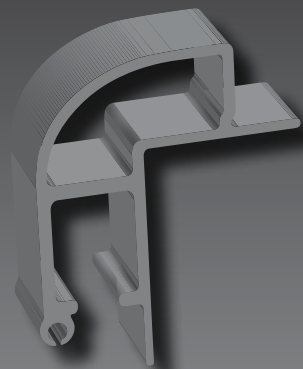


**GRP
PANELS**
available in a range
of grades and sizes



Cant Rail Systems

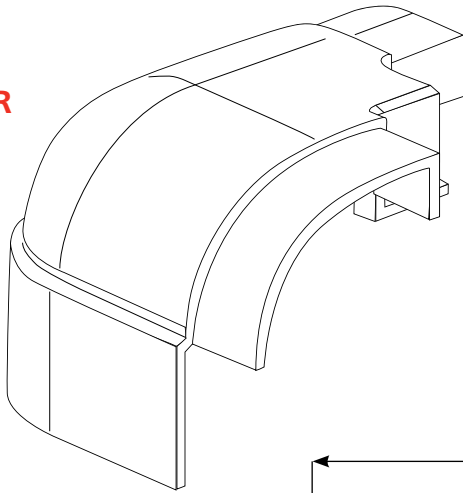


aalco[®]

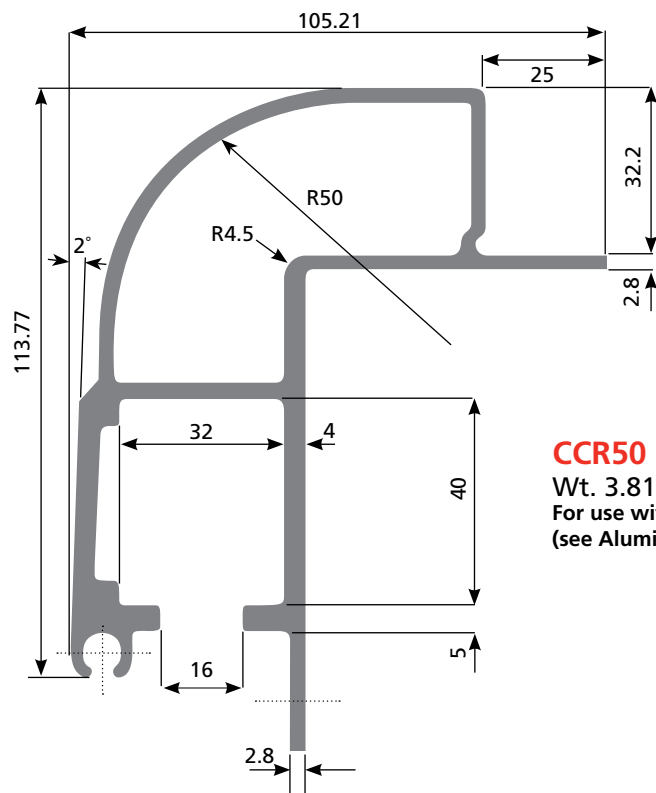
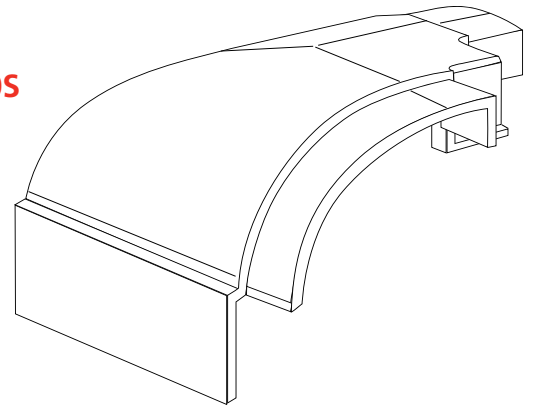
The UK's largest independent
multi-metals stockholder

2" STANDARD GRP BOX SYSTEM

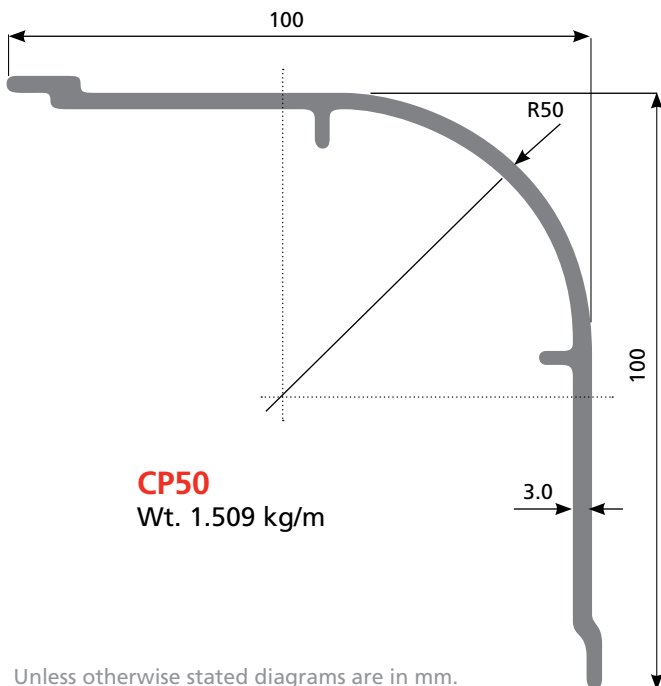
CC50R



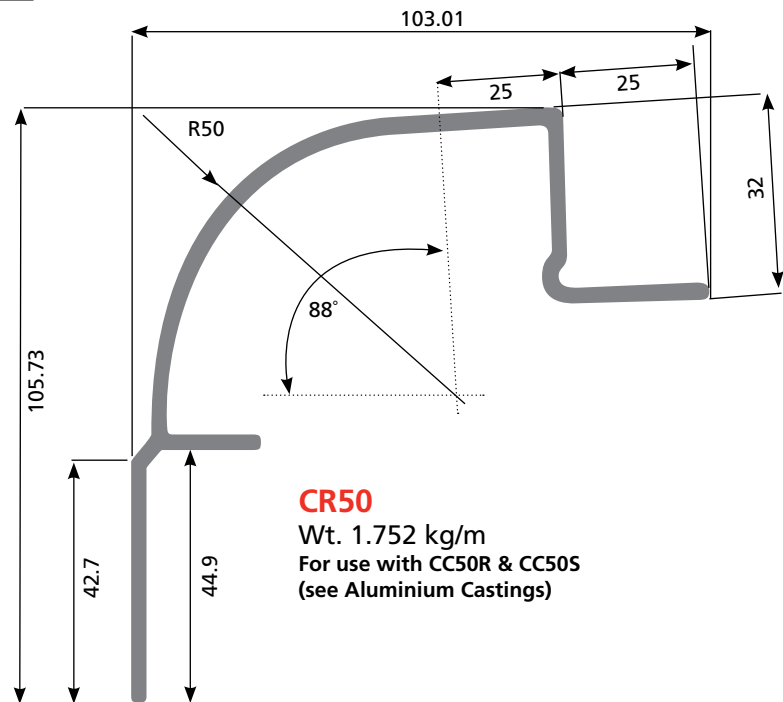
CC50S



CCR50
Wt. 3.814 kg/m
For use with CC50R & CC50S
(see Aluminium Castings)



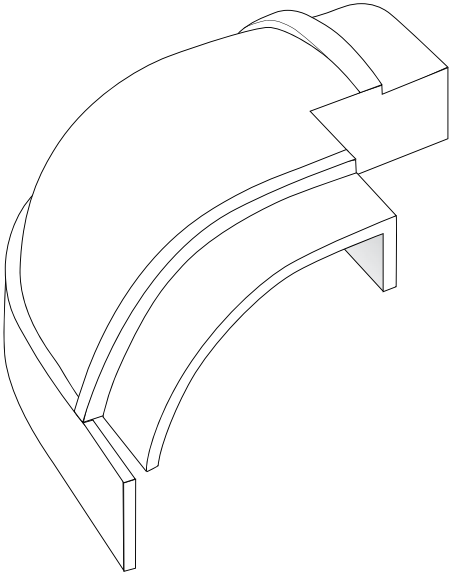
CP50
Wt. 1.509 kg/m



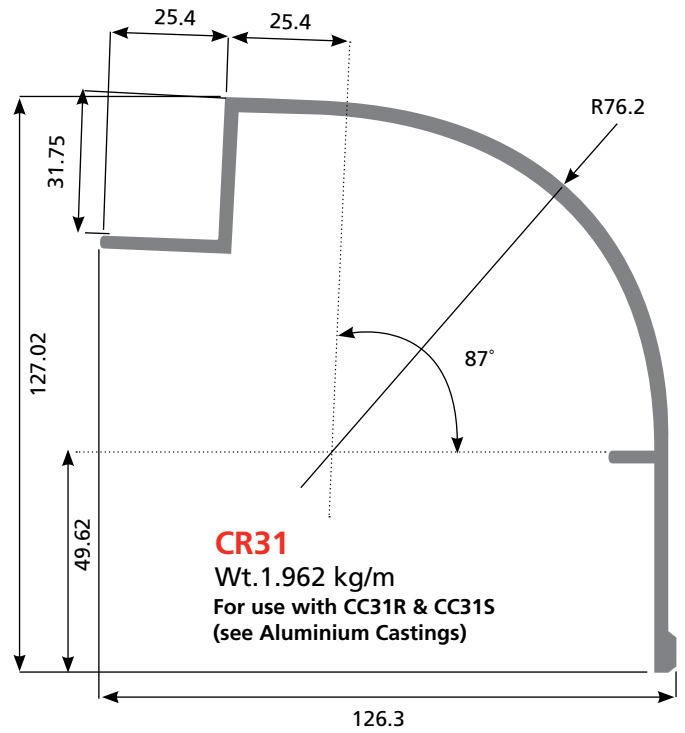
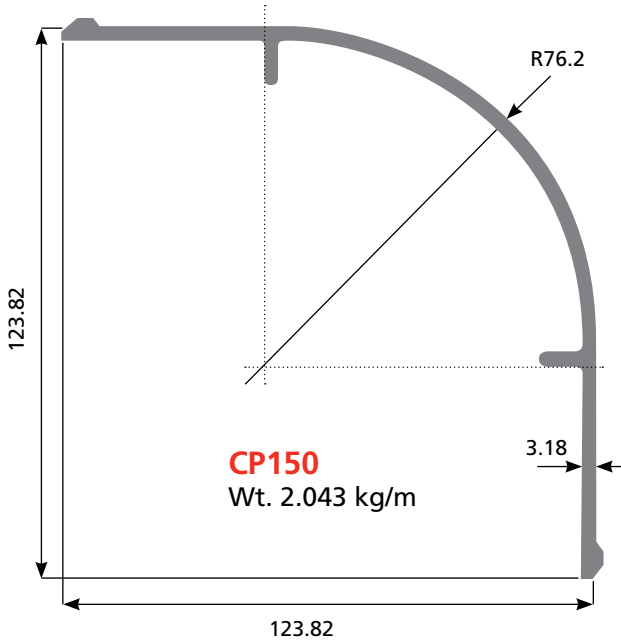
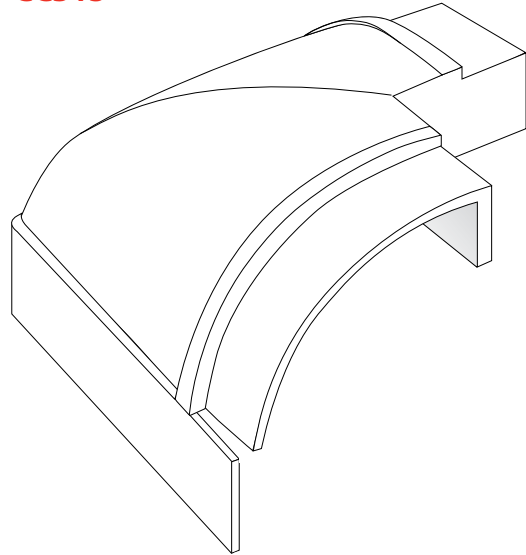
CR50
Wt. 1.752 kg/m
For use with CC50R & CC50S
(see Aluminium Castings)

3" STANDARD GRP BOX SYSTEM

CC31R

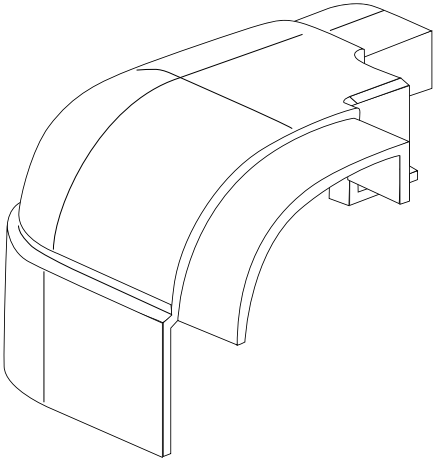


CC31S

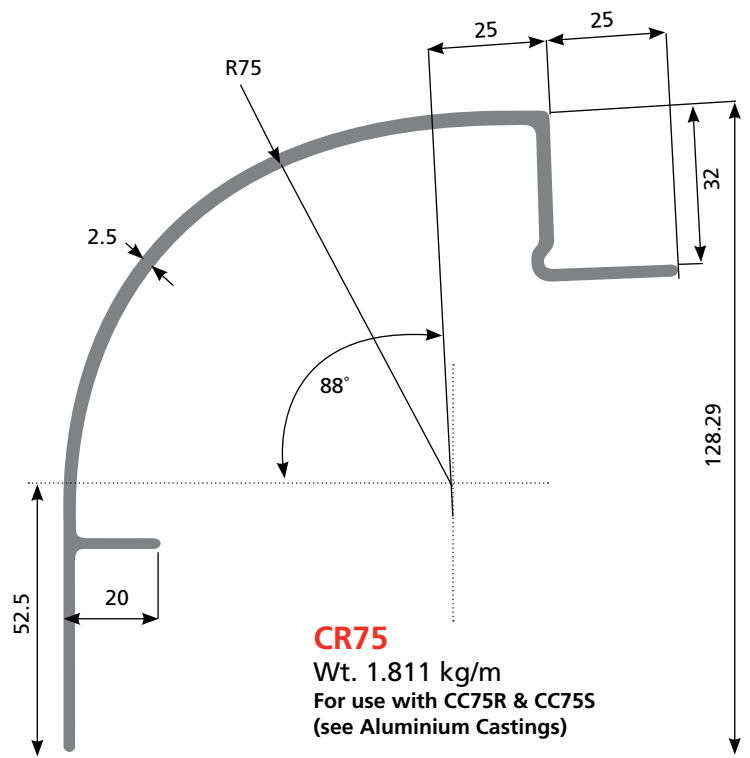
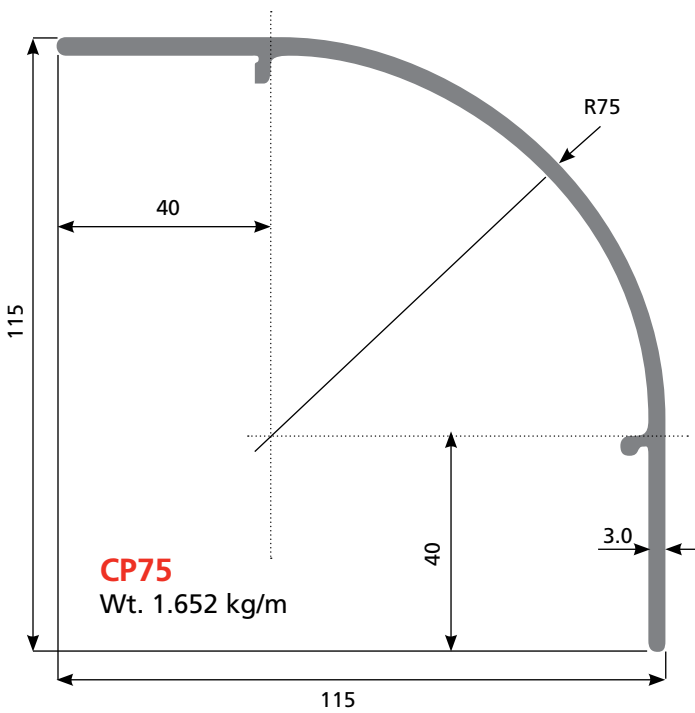
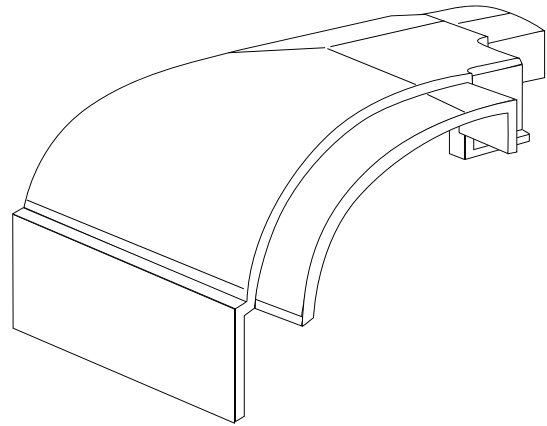


ALTERNATIVE 3" STANDARD GRP BOX SYSTEM

CC75R

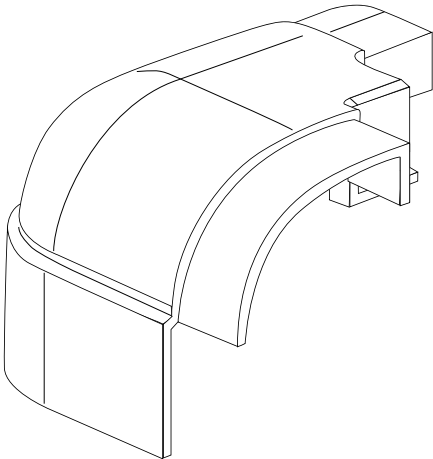


CC75S

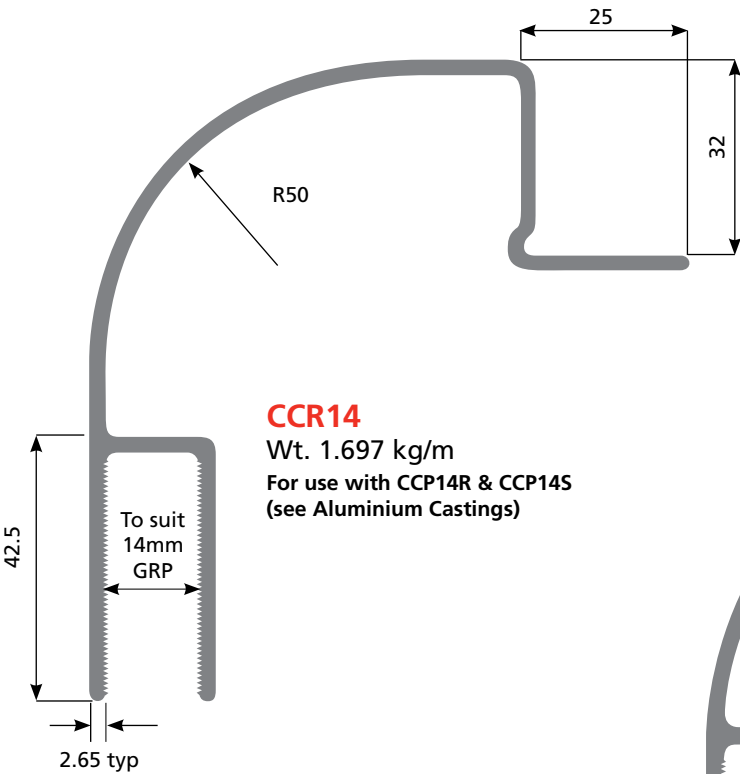
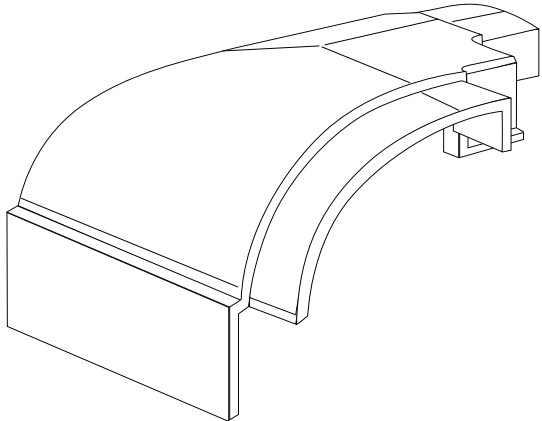


2" CAPTIVE GRP SYSTEM

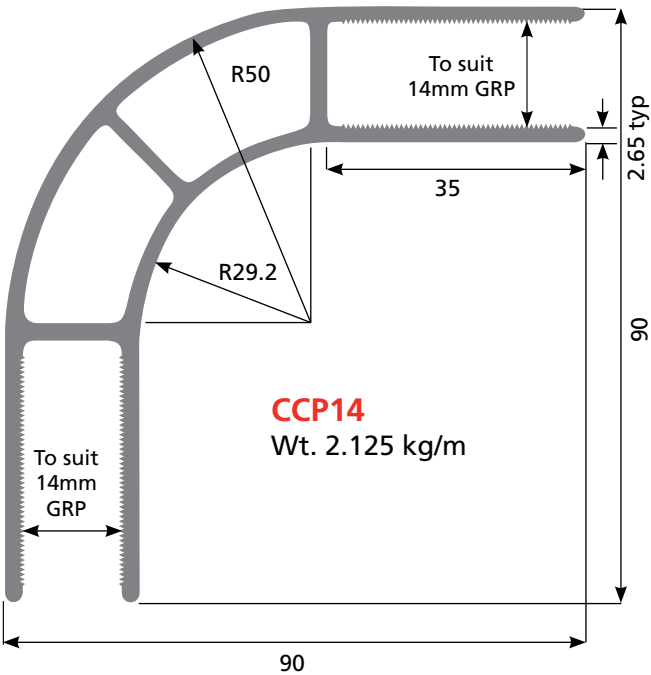
CCP14R



CCP14S



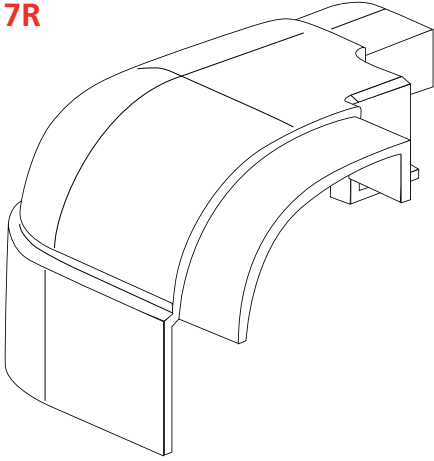
CCR14
 Wt. 1.697 kg/m
 For use with CCP14R & CCP14S
 (see Aluminium Castings)



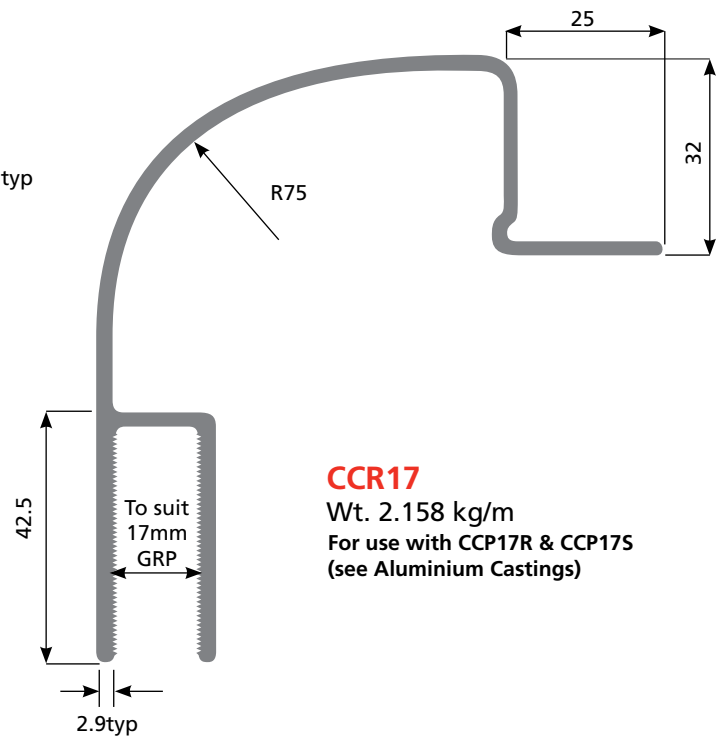
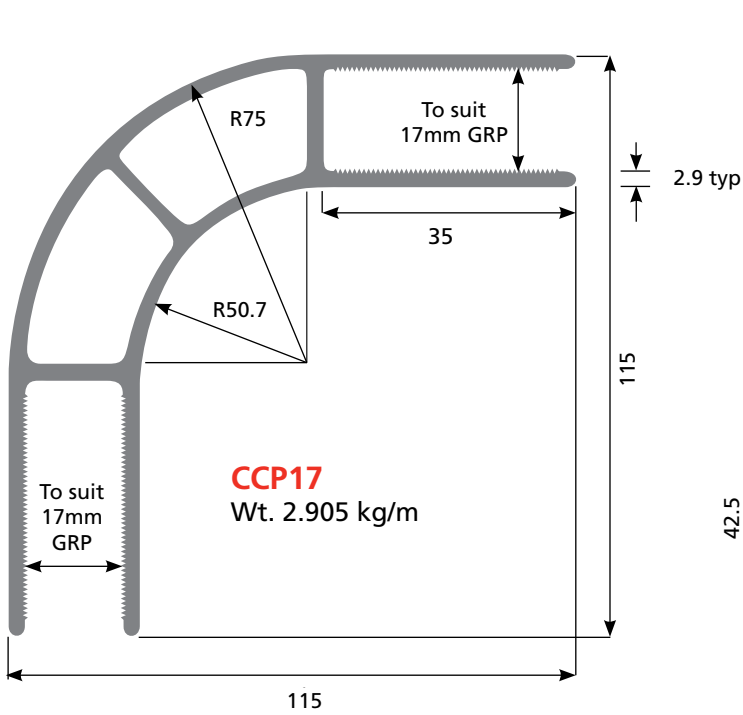
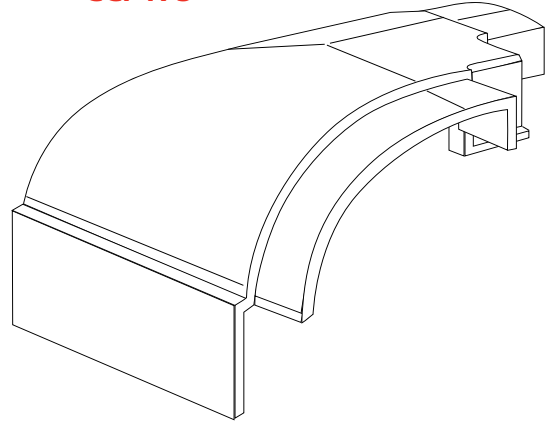
CCP14
 Wt. 2.125 kg/m

3" CAPTIVE GRP SYSTEM

CCP17R

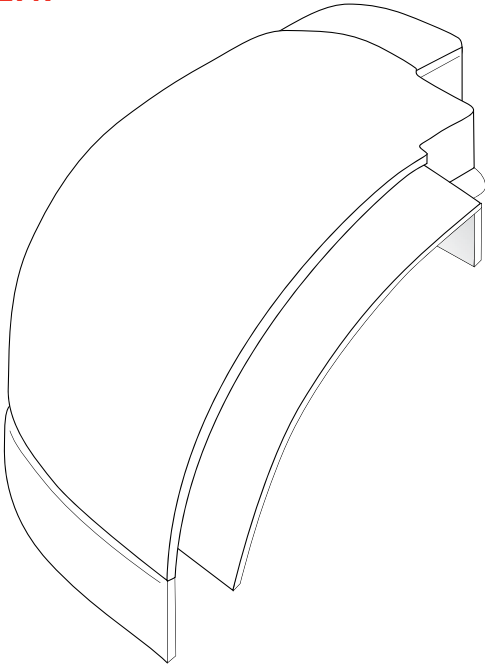


CCP17S

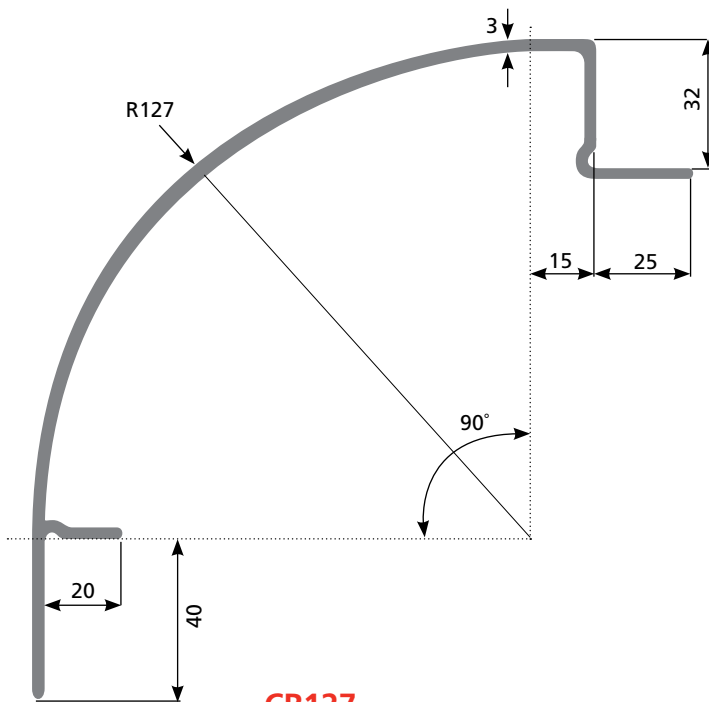
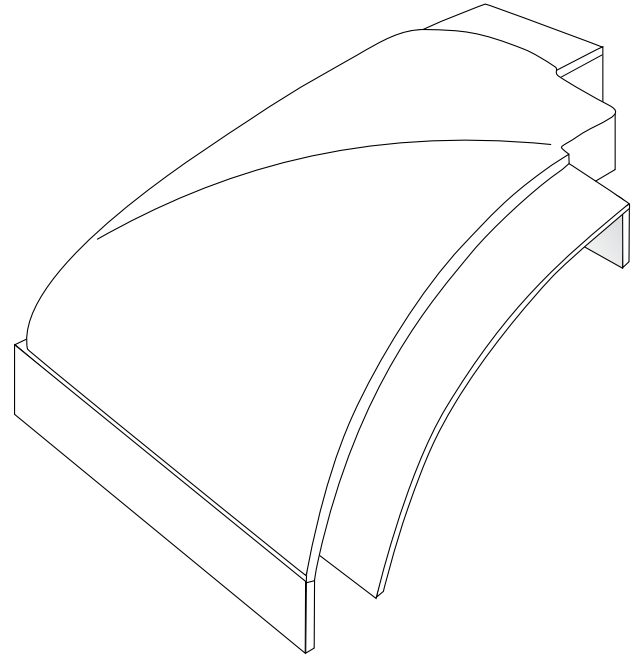


5" GRP SYSTEM

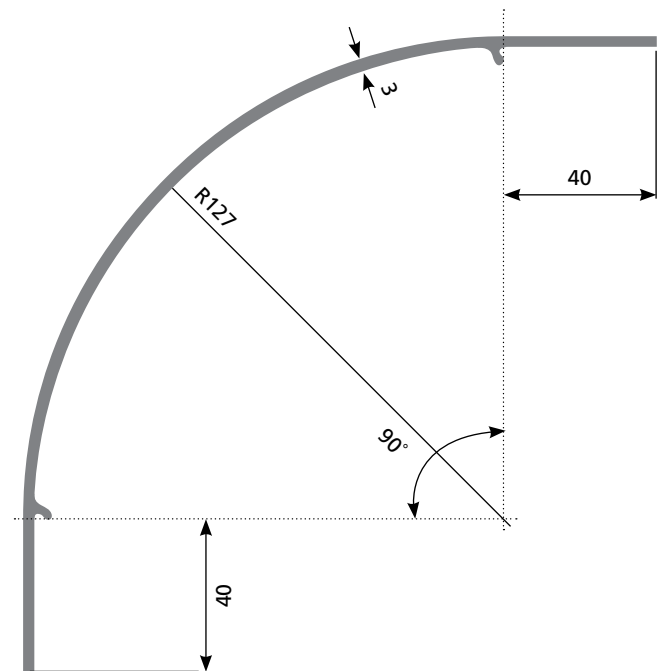
CC127R



CC127S



CR127
Wt. 2.692 kg/m
For use with CC127R & CC127S
(see Aluminium Castings)



CP127
Wt. 2.298 kg/m

ROOF COILS



GRP Roof Coil

2550mm wide x 1.3mm thick.

Available in Opal or Blue. 42 metre long coils that can be cut to any length then recoiled and packed for easy transportation.



Aluminium Roof Coil

2550mm wide x 0.8mm thick.

Available in full coil and cut to any length specified, then recoiled for easy transport and handling.

SEALANTS & ADHESIVES

Detaflex 4000

Description

Detaflex 4000 is a high modulus, fast vulcanising, elastic surpaintable, one component polyurethane sealant for sealing and bonding in the automotive and truck industry. WRAS approved.



Parabond 600

Description

A high quality, fast curing universal adhesive sealant based on MS polymer with very high initial strength. Perfect for bonding and sealing of most materials.



Double-Sided Tape

DS1619

White, high bond strength DS Tape for a wide range of applications. Bonds well to metals, plastics, etc.



ABERDEEN

Tel 01224 854810
Fax 01224 871982
e-mail aberdeen@aalco.co.uk

CHEPSTOW

Tel 01291 638638
Fax 01291 638600
e-mail chepstow@aalco.co.uk

LEEDS

Tel 0113 2763300
Fax 0113 2760382
e-mail leeds@aalco.co.uk

NOTTINGHAM

Tel 0115 9882600
Fax 0115 9882636
e-mail nottingham@aalco.co.uk

AYLESBURY

Tel 01296 461700
Fax 01296 339923
e-mail aylesbury@aalco.co.uk

DYFED

Tel 01269 842044
Fax 01269 845276
e-mail dyfed@aalco.co.uk

LIVERPOOL

Tel 0151 2073551
Fax 0151 2072657
e-mail liverpool@aalco.co.uk

SOUTHAMPTON

Tel 023 8087 5200
Fax 023 8087 5275
e-mail southampton@aalco.co.uk

BELFAST

Tel 02890 838838
Fax 02890 837837
e-mail belfast@aalco.co.uk

ESSEX

Tel 01268 884200
Fax 01268 884220
e-mail essex@aalco.co.uk

MANCHESTER

Tel 01204 863456
Fax 01204 863430
e-mail manchester@aalco.co.uk

STOKE

Tel 01782 375700
Fax 01782 375701
e-mail stoke@aalco.co.uk

BIRMINGHAM

Tel 0121 5853600
Fax 0121 5856864
e-mail birmingham@aalco.co.uk

GLASGOW

Tel 0141 6463200
Fax 0141 6463260
e-mail glasgow@aalco.co.uk

NEWCASTLE

Tel 0191 4911133
Fax 0191 4911177
e-mail newcastle@aalco.co.uk

SWANLEY

Tel 01322 610900
Fax 01322 610910
e-mail swanley@aalco.co.uk

HULL

Tel 01482 626262
Fax 01482 626263
e-mail hull@aalco.co.uk

NORWICH

Tel 01603 787878
Fax 01603 789999
e-mail norwich@aalco.co.uk